



ELECTRONIC COPY

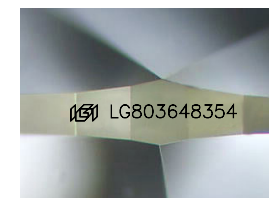
LG803648354
Report verification at igi.org



May 29, 2026
IGI Report Number **LG803648354**
Description **LABORATORY GROWN DIAMOND**
Shape and Cutting Style **HEART MODIFIED BRILLIANT**
Measurements **6.29 X 7.30 X 4.03 MM**

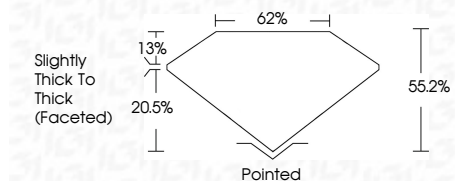
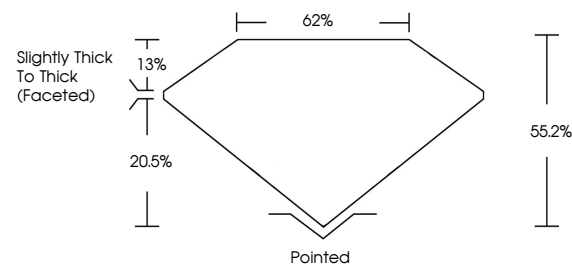
GRADING RESULTS

Carat Weight **1.44 CARAT**
Color Grade **FANCY INTENSE BLUE**
Clarity Grade **VVS 2**

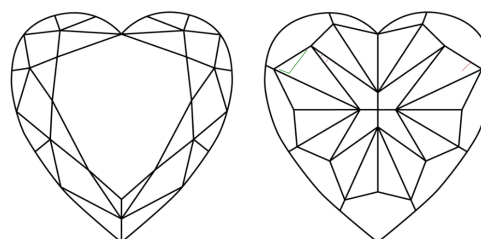


Sample Image Used

PROPORTIONS



CLARITY CHARACTERISTICS



KEY TO SYMBOLS

Red symbols indicate internal characteristics.
Green symbols indicate external characteristics.

COLOR

D E F G H I J Faint Very Light Light

CLARITY

FL	IF	VVS ¹⁻²	VS ¹⁻²	SI ¹⁻²	I ¹⁻³
Flawless	Internally Flawless	Very Very Slightly Included	Very Slightly Included	Slightly Included	Included

ADDITIONAL GRADING INFORMATION

Polish **VERY GOOD**
Symmetry **VERY GOOD**
Fluorescence **NONE**
Inscription(s) **(IGI) LG803648354**

Comments: This Laboratory Grown Diamond was created by High Pressure High Temperature (HPHT) growth process. Indications of post-growth treatment.



IGI



May 29, 2026
IGI Report No. **LG803648354**
HEART MODIFIED BRILLIANT
6.29 X 7.30 X 4.03 MM
Carat Weight **1.44 CARAT**
Color Grade **FANCY INTENSE BLUE**
Clarity Grade **VVS 2**
Depth **13%**
Table **62%**
Girdle **Slightly Thick To Thick (Faceted)**
Culet **Pointed**
Polish **VERY GOOD**
Symmetry **VERY GOOD**
Fluorescence **NONE**
Inscription(s) **(IGI) LG803648354**

Comments: This Laboratory Grown Diamond was created by High Pressure High Temperature (HPHT) growth process. Indications of post-growth treatment.