



ELECTRONIC COPY

LABORATORY GROWN DIAMOND REPORT

May 29, 2026
IGI Report Number **LG803648391**
Description **LABORATORY GROWN DIAMOND**
Shape and Cutting Style **OVAL MODIFIED BRILLIANT**
Measurements **8.38 X 6.17 X 4.25 MM**

GRADING RESULTS

Carat Weight **1.80 CARAT**
Color Grade **FANCY VIVID BLUE**
Clarity Grade **VS 1**

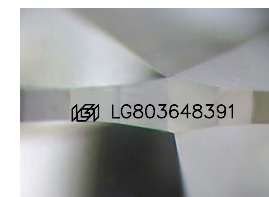
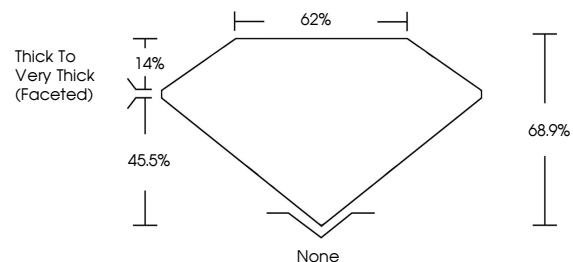
ADDITIONAL GRADING INFORMATION

Polish **VERY GOOD**
Symmetry **VERY GOOD**
Fluorescence **NONE**
Inscription(s) **IGI LG803648391**

Comments: This Laboratory Grown Diamond was created by High Pressure High Temperature (HPHT) growth process.
Indications of post-growth treatment.

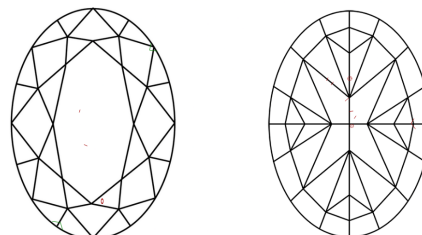
Secondary color: Green

PROPORTIONS



Sample Image Used

CLARITY CHARACTERISTICS



KEY TO SYMBOLS

Red symbols indicate internal characteristics.
Green symbols indicate external characteristics.

COLOR

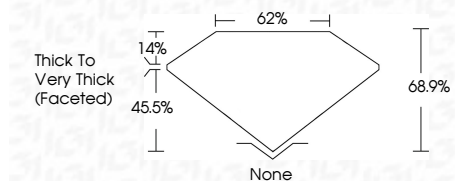
D E F G H I J Faint Very Light Light

CLARITY

FL IF VS¹⁻² VS¹⁻² SI¹⁻² I¹⁻³
Flawless Internally Flawless Very Very Slightly Included Very Slightly Included Slightly Included Included



May 29, 2026
IGI Report Number **LG803648391**
Description **LABORATORY GROWN DIAMOND**
Shape and Cutting Style **OVAL MODIFIED BRILLIANT**
Measurements **8.38 X 6.17 X 4.25 MM**
GRADING RESULTS
Carat Weight **1.80 CARAT**
Color Grade **FANCY VIVID BLUE**
Clarity Grade **VS 1**



ADDITIONAL GRADING INFORMATION

Polish **VERY GOOD**
Symmetry **VERY GOOD**
Fluorescence **NONE**
Inscription(s) **IGI LG803648391**
Comments: This Laboratory Grown Diamond was created by High Pressure High Temperature (HPHT) growth process.
Indications of post-growth treatment.
Secondary color: Green



May 29, 2026
IGI Report No. **LG803648391**
OVAL MODIFIED BRILLIANT
8.38 X 6.17 X 4.25 MM
1.80 CARAT
FANCY VIVID BLUE
VS 1
68.9%
62%
Thick to Very Thick (Faceted)
None
VERY GOOD
VERY GOOD
NONE
IGI LG803648391
Comments: This Laboratory Grown Diamond was created by High Pressure High Temperature (HPHT) growth process.
Indications of post-growth treatment.
Secondary color: Green