



ELECTRONIC COPY

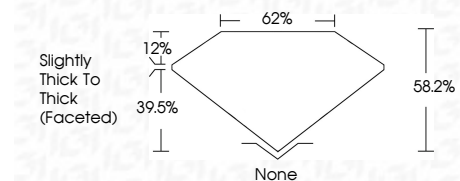
LG803648799
Report verification at igi.org



June 4, 2026
IGI Report Number **LG803648799**
Description **LABORATORY GROWN DIAMOND**

Shape and Cutting Style **PEAR MODIFIED BRILLIANT**
Measurements **10.84 X 6.39 X 3.72 MM**

GRADING RESULTS
Carat Weight **1.81 CARAT**
Color Grade **FANCY VIVID GREEN**
Clarity Grade **VVS 2**



ADDITIONAL GRADING INFORMATION
Polish **EXCELLENT**
Symmetry **EXCELLENT**
Fluorescence **NONE**
Inscription(s) **(IGI) LG803648799**
Comments: This Laboratory Grown Diamond was created by Chemical Vapor Deposition (CVD) growth process. Indications of post-growth treatment.



June 4, 2026
IGI Report No **LG803648799**
PEAR MODIFIED BRILLIANT
10.84 X 6.39 X 3.72 MM
1.81 CARAT
FANCY VIVID GREEN
VVS 2
58.2%
62%
Slightly Thick To Thick (Faceted)
None
EXCELLENT
EXCELLENT
NONE
(IGI) LG803648799
Comments: This Laboratory Grown Diamond was created by Chemical Vapor Deposition (CVD) growth process. Indications of post-growth treatment.

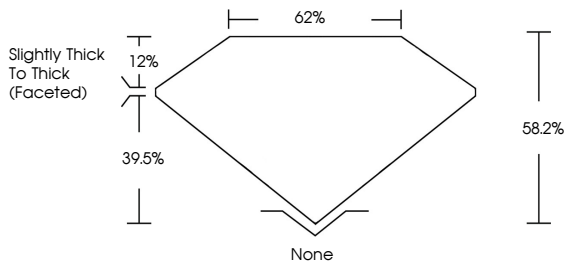
June 4, 2026
IGI Report Number **LG803648799**
Description **LABORATORY GROWN DIAMOND**
Shape and Cutting Style **PEAR MODIFIED BRILLIANT**
Measurements **10.84 X 6.39 X 3.72 MM**

GRADING RESULTS
Carat Weight **1.81 CARAT**
Color Grade **FANCY VIVID GREEN**
Clarity Grade **VVS 2**

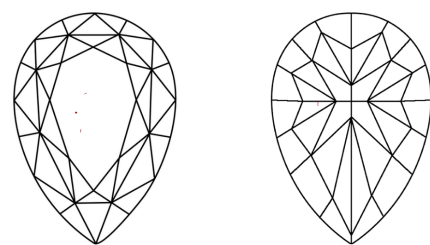
ADDITIONAL GRADING INFORMATION
Polish **EXCELLENT**
Symmetry **EXCELLENT**
Fluorescence **NONE**
Inscription(s) **(IGI) LG803648799**

Comments: This Laboratory Grown Diamond was created by Chemical Vapor Deposition (CVD) growth process. Indications of post-growth treatment.

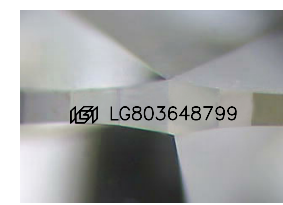
PROPORTIONS



CLARITY CHARACTERISTICS



KEY TO SYMBOLS
Red symbols indicate internal characteristics.
Green symbols indicate external characteristics.



Sample Image Used

COLOR

D	E	F	G	H	I	J	Faint	Very Light	Light
---	---	---	---	---	---	---	-------	------------	-------

CLARITY

FL	IF	VVS ¹⁻²	VS ¹⁻²	SI ¹⁻²	I ¹⁻³
Flawless	Internally Flawless	Very Very Slightly Included	Very Slightly Included	Slightly Included	Included

