



**ELECTRONIC COPY**

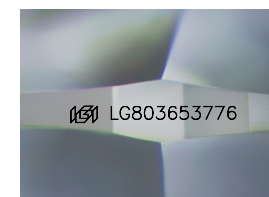
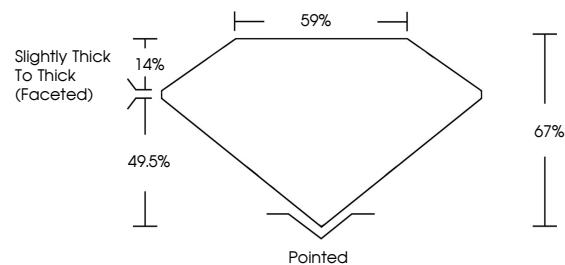
LG803653776  
Report verification at [igi.org](http://igi.org)



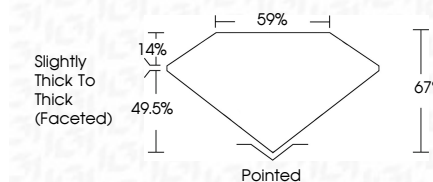
May 25, 2026  
IGI Report Number **LG803653776**  
Description **LABORATORY GROWN DIAMOND**  
Shape and Cutting Style **CUSHION MODIFIED BRILLIANT**  
Measurements **12.09 X 8.48 X 5.68 MM**  
**GRADING RESULTS**  
Carat Weight **4.56 CARATS**  
Color Grade **E**  
Clarity Grade **VS 1**

May 25, 2026  
IGI Report Number **LG803653776**  
Description **LABORATORY GROWN DIAMOND**  
Shape and Cutting Style **CUSHION MODIFIED BRILLIANT**  
Measurements **12.09 X 8.48 X 5.68 MM**  
**GRADING RESULTS**  
Carat Weight **4.56 CARATS**  
Color Grade **E**  
Clarity Grade **VS 1**

**PROPORTIONS**



Sample Image Used



**ADDITIONAL GRADING INFORMATION**

Polish **EXCELLENT**  
Symmetry **EXCELLENT**  
Fluorescence **NONE**  
Inscription(s) **IGI LG803653776**

Comments: This Laboratory Grown Diamond was created by Chemical Vapor Deposition (CVD) growth process.  
Type IIa

**ADDITIONAL GRADING INFORMATION**

Polish **EXCELLENT**  
Symmetry **EXCELLENT**  
Fluorescence **NONE**  
Inscription(s) **IGI LG803653776**  
Comments: This Laboratory Grown Diamond was created by Chemical Vapor Deposition (CVD) growth process.  
Type IIa

**COLOR**

D E F G H I J Faint Very Light Light

**CLARITY**

FL	IF	VS <sup>1-2</sup>	VS <sup>1-2</sup>	SI <sup>1-2</sup>	I <sup>1-3</sup>
Flawless	Internally Flawless	Very Very Slightly Included	Very Slightly Included	Slightly Included	Included



**IGI**



May 25, 2026  
IGI Report No **LG803653776**  
**CUSHION MODIFIED BRILLIANT**  
12.09 X 8.48 X 5.68 MM  
Carat Weight **4.56 CARATS**  
Color Grade **E**  
Clarity Grade **VS 1**  
Depth **67%**  
Table **59%**  
Girdle **Slightly Thick To Thick (Faceted)**  
Culet **Pointed**  
Polish **EXCELLENT**  
Symmetry **EXCELLENT**  
Fluorescence **NONE**  
Inscription(s) **IGI LG803653776**

Comments: This Laboratory Grown Diamond was created by Chemical Vapor Deposition (CVD) growth process.  
Type IIa