



**ELECTRONIC COPY**

LG803671423  
Report verification at igi.org



May 25, 2026

IGI Report Number **LG803671423**

Description **LABORATORY GROWN DIAMOND**

Shape and Cutting Style **ROUND BRILLIANT**

Measurements **6.55 - 6.59 X 3.90 MM**

**GRADING RESULTS**

Carat Weight **1.02 CARAT**

Color Grade **E**

Clarity Grade **VVS 2**

Cut Grade **EXCELLENT**

May 25, 2026

IGI Report Number **LG803671423**

Description **LABORATORY GROWN DIAMOND**

Shape and Cutting Style **ROUND BRILLIANT**

Measurements **6.55 - 6.59 X 3.90 MM**

**GRADING RESULTS**

Carat Weight **1.02 CARAT**

Color Grade **E**

Clarity Grade **VVS 2**

Cut Grade **EXCELLENT**

**ADDITIONAL GRADING INFORMATION**

Polish **EXCELLENT**

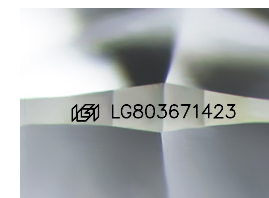
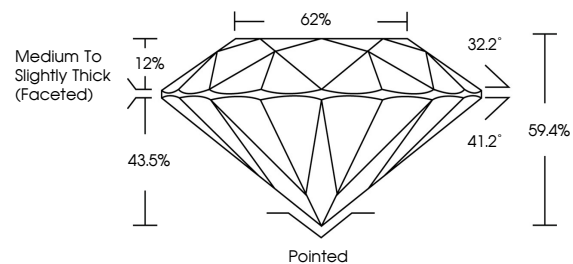
Symmetry **EXCELLENT**

Fluorescence **NONE**

Inscription(s) **IGI LG803671423**

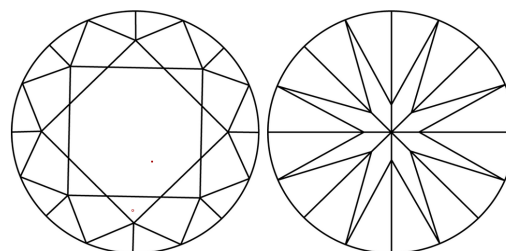
Comments: This Laboratory Grown Diamond was created by Chemical Vapor Deposition (CVD) growth process. Type IIa

**PROPORTIONS**



Sample Image Used

**CLARITY CHARACTERISTICS**



**KEY TO SYMBOLS**

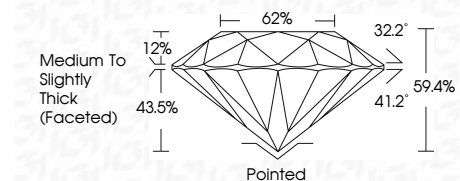
Red symbols indicate internal characteristics.  
Green symbols indicate external characteristics.

**COLOR**

D E F G H I J Faint Very Light Light

**CLARITY**

FL	IF	VVS <sup>1-2</sup>	VS <sup>1-2</sup>	SI <sup>1-2</sup>	I <sup>1-3</sup>
Flawless	Internally Flawless	Very Very Slightly Included	Very Slightly Included	Slightly Included	Included



**ADDITIONAL GRADING INFORMATION**

Polish **EXCELLENT**

Symmetry **EXCELLENT**

Fluorescence **NONE**

Inscription(s) **IGI LG803671423**

Comments: This Laboratory Grown Diamond was created by Chemical Vapor Deposition (CVD) growth process. Type IIa



**IGI**



May 25, 2026  
IGI Report No. LG803671423  
ROUND BRILLIANT  
6.55 - 6.59 X 3.90 MM  
Carat Weight 1.02 CARAT  
Color Grade E  
Clarity Grade VVS 2  
Cut Grade EXCELLENT  
Depth 43.5%  
Table 12%  
Girdle 62%  
Medium To Slightly Thick (Faceted)  
Culet Pointed  
Polish EXCELLENT  
Symmetry EXCELLENT  
Fluorescence NONE  
Inscription(s) IGI LG803671423  
Comments: This Laboratory Grown Diamond was created by Chemical Vapor Deposition (CVD) growth process. Type IIa