



ELECTRONIC COPY

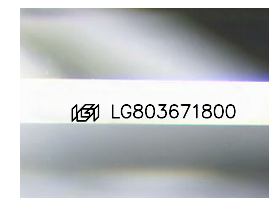
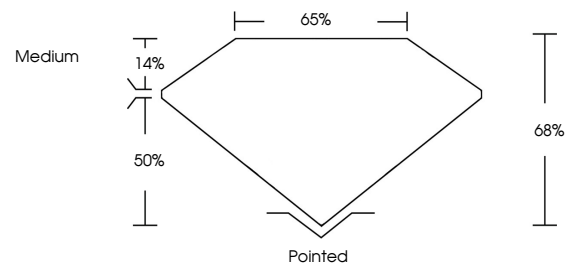
LG803671800
Report verification at igi.org



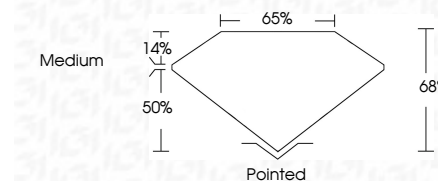
May 27, 2026
IGI Report Number LG803671800
Description LABORATORY GROWN DIAMOND
Shape and Cutting Style CUT CORNERED RECTANGULAR MODIFIED BRILLIANT
Measurements 9.51 X 6.74 X 4.58 MM
GRADING RESULTS
Carat Weight 2.58 CARATS
Color Grade E
Clarity Grade VVS 2

May 27, 2026
IGI Report Number LG803671800
Description LABORATORY GROWN DIAMOND
Shape and Cutting Style CUT CORNERED RECTANGULAR MODIFIED BRILLIANT
Measurements 9.51 X 6.74 X 4.58 MM

PROPORTIONS



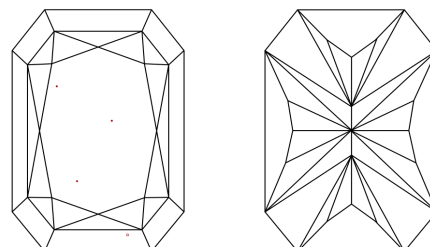
Sample Image Used



GRADING RESULTS

Carat Weight 2.58 CARATS
Color Grade E
Clarity Grade VVS 2

CLARITY CHARACTERISTICS



KEY TO SYMBOLS

Red symbols indicate internal characteristics.
Green symbols indicate external characteristics.

COLOR

D E F G H I J Faint Very Light Light

CLARITY

FL IF VVS 1-2 VS 1-2 SI 1-2 I 1-3
Flawless Internally Flawless Very Very Slightly Included Very Slightly Included Slightly Included Included

ADDITIONAL GRADING INFORMATION

Polish EXCELLENT
Symmetry EXCELLENT
Fluorescence NONE
Inscription(s) LG803671800
Comments: This Laboratory Grown Diamond was created by Chemical Vapor Deposition (CVD) growth process. Type IIa

ADDITIONAL GRADING INFORMATION

Polish EXCELLENT
Symmetry EXCELLENT
Fluorescence NONE
Inscription(s) LG803671800

Comments: This Laboratory Grown Diamond was created by Chemical Vapor Deposition (CVD) growth process. Type IIa



IGI

May 27, 2026
IGI Report No. LG803671800
CUT CORNERED RECT. MODIFIED BRILLIANT
9.51 X 6.74 X 4.58 MM
2.58 CARATS
E
VVS 2
68%
65%
Medium
Pointed
EXCELLENT
EXCELLENT
NONE
Inscription(s) LG803671800

Comments: This Laboratory Grown Diamond was created by Chemical Vapor Deposition (CVD) growth process. Type IIa