



ELECTRONIC COPY

LG803686493
Report verification at igi.org



May 27, 2026
IGI Report Number LG803686493
Description LABORATORY GROWN DIAMOND
Shape and Cutting Style CUT CORNERED RECTANGULAR MODIFIED BRILLIANT
Measurements 15.48 X 10.81 X 7.16 MM
GRADING RESULTS
Carat Weight 10.26 CARATS
Color Grade F
Clarity Grade VS 1

May 27, 2026
IGI Report Number LG803686493
Description LABORATORY GROWN DIAMOND
Shape and Cutting Style CUT CORNERED RECTANGULAR MODIFIED BRILLIANT
Measurements 15.48 X 10.81 X 7.16 MM

GRADING RESULTS

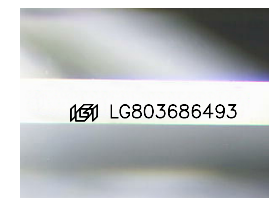
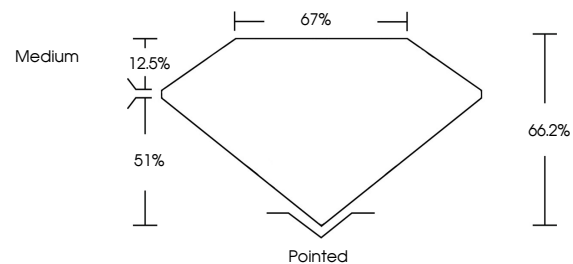
Carat Weight 10.26 CARATS
Color Grade F
Clarity Grade VS 1

ADDITIONAL GRADING INFORMATION

Polish EXCELLENT
Symmetry EXCELLENT
Fluorescence NONE
Inscription(s) LG803686493

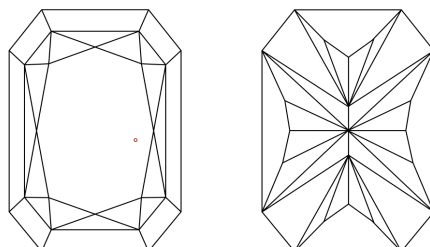
Comments: This Laboratory Grown Diamond was created by Chemical Vapor Deposition (CVD) growth process. Type IIa

PROPORTIONS



Sample Image Used

CLARITY CHARACTERISTICS



KEY TO SYMBOLS

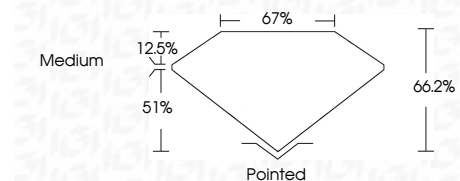
Red symbols indicate internal characteristics.
Green symbols indicate external characteristics.

COLOR

D E F G H I J Faint Very Light Light

CLARITY

FL IF VS 1-2 VS 2-3 SI 1-2 I 1-3
Flawless Internally Flawless Very Very Slightly Included Very Slightly Included Slightly Included Included



ADDITIONAL GRADING INFORMATION

Polish EXCELLENT
Symmetry EXCELLENT
Fluorescence NONE
Inscription(s) LG803686493
Comments: This Laboratory Grown Diamond was created by Chemical Vapor Deposition (CVD) growth process. Type IIa



May 27, 2026
IGI Report No LG803686493
CUT CORNERED RECT. MODIFIED BRILLIANT
15.48 X 10.81 X 7.16 MM
10.26 CARATS
F
VS 1
66.2%
67%
Medium
Pointed
EXCELLENT
EXCELLENT
NONE
Inscription(s) LG803686493
Comments: This Laboratory Grown Diamond was created by Chemical Vapor Deposition (CVD) growth process. Type IIa