



ELECTRONIC COPY

LG803691403 Report verification at igi.org



June 1, 2026 IGI Report Number LG803691403 Description LABORATORY GROWN DIAMOND Shape and Cutting Style CUT CORNERED RECTANGULAR MODIFIED BRILLIANT Measurements 12.31 X 8.52 X 5.73 MM GRADING RESULTS Carat Weight 5.07 CARATS Color Grade E Clarity Grade VS 1

LABORATORY GROWN DIAMOND REPORT

June 1, 2026 IGI Report Number LG803691403 Description LABORATORY GROWN DIAMOND Shape and Cutting Style CUT CORNERED RECTANGULAR MODIFIED BRILLIANT Measurements 12.31 X 8.52 X 5.73 MM

GRADING RESULTS

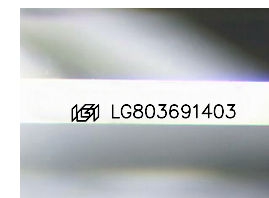
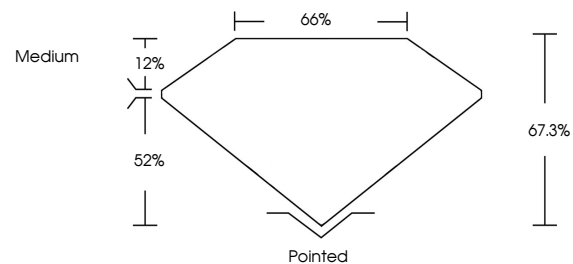
Carat Weight 5.07 CARATS Color Grade E Clarity Grade VS 1

ADDITIONAL GRADING INFORMATION

Polish EXCELLENT Symmetry EXCELLENT Fluorescence NONE Inscription(s) LG803691403

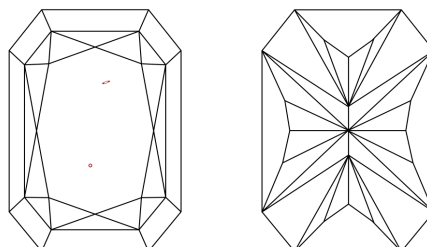
Comments: This Laboratory Grown Diamond was created by Chemical Vapor Deposition (CVD) growth process. Type IIa

PROPORTIONS



Sample Image Used

CLARITY CHARACTERISTICS



KEY TO SYMBOLS

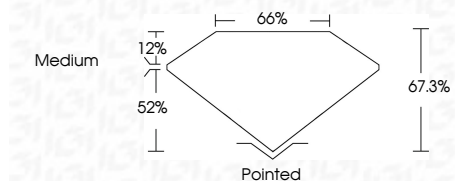
Red symbols indicate internal characteristics. Green symbols indicate external characteristics.

COLOR

D E F G H I J Faint Very Light Light

CLARITY

FL IF VS 1-2 VS 2-3 SI 1-2 I 1-3 Flawless Internally Flawless Very Very Slightly Included Very Slightly Included Slightly Included Included



ADDITIONAL GRADING INFORMATION

Polish EXCELLENT Symmetry EXCELLENT Fluorescence NONE Inscription(s) LG803691403 Comments: This Laboratory Grown Diamond was created by Chemical Vapor Deposition (CVD) growth process. Type IIa



June 1, 2026 IGI Report No LG803691403 CUT CORNERED RECT. MODIFIED BRILLIANT 12.31 X 8.52 X 5.73 MM 5.07 CARATS E VS 1 67.3% 65% Medium Pointed EXCELLENT EXCELLENT NONE LG803691403 Comments: This Laboratory Grown Diamond was created by Chemical Vapor Deposition (CVD) growth process. Type IIa