



ELECTRONIC COPY

LG803696827 Report verification at igi.org



May 28, 2026 IGI Report Number LG803696827 Description LABORATORY GROWN DIAMOND Shape and Cutting Style CUT CORNERED RECTANGULAR MODIFIED BRILLIANT Measurements 12.28 X 8.53 X 5.70 MM GRADING RESULTS Carat Weight 5.08 CARATS Color Grade E Clarity Grade VVS 2

May 28, 2026 IGI Report Number LG803696827 Description LABORATORY GROWN DIAMOND Shape and Cutting Style CUT CORNERED RECTANGULAR MODIFIED BRILLIANT Measurements 12.28 X 8.53 X 5.70 MM

GRADING RESULTS

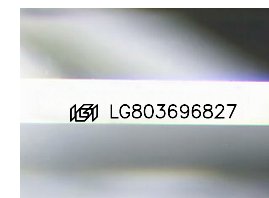
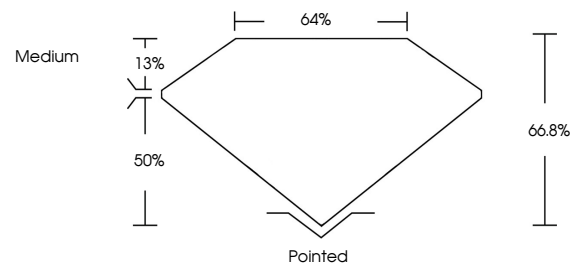
Carat Weight 5.08 CARATS Color Grade E Clarity Grade VVS 2

ADDITIONAL GRADING INFORMATION

Polish EXCELLENT Symmetry EXCELLENT Fluorescence NONE Inscription(s) LG803696827

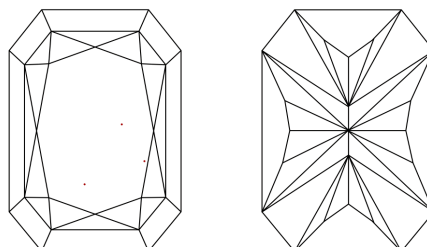
Comments: This Laboratory Grown Diamond was created by Chemical Vapor Deposition (CVD) growth process. Type IIa

PROPORTIONS



Sample Image Used

CLARITY CHARACTERISTICS



KEY TO SYMBOLS

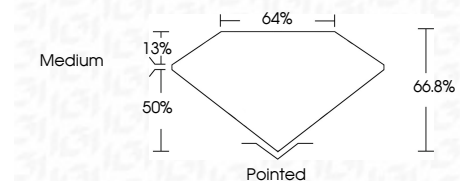
Red symbols indicate internal characteristics. Green symbols indicate external characteristics.

COLOR

D E F G H I J Faint Very Light Light

CLARITY

FL IF VVS 1-2 VS 1-2 SI 1-2 I 1-3 Flawless Internally Flawless Very Very Slightly Included Very Slightly Included Slightly Included Included



ADDITIONAL GRADING INFORMATION

Polish EXCELLENT Symmetry EXCELLENT Fluorescence NONE Inscription(s) LG803696827 Comments: This Laboratory Grown Diamond was created by Chemical Vapor Deposition (CVD) growth process. Type IIa



IGI



May 28, 2026 IGI Report No LG803696827 CUT CORNERED RECT. MODIFIED BRILLIANT 12.28 X 8.53 X 5.70 MM 5.08 CARATS E VVS 2 66.8% 64% Medium Pointed EXCELLENT EXCELLENT NONE NONE LG803696827

Comments: This Laboratory Grown Diamond was created by Chemical Vapor Deposition (CVD) growth process. Type IIa