



ELECTRONIC COPY

LG803699408
Report verification at igi.org



May 29, 2026

IGI Report Number **LG803699408**

Description **LABORATORY GROWN DIAMOND**

Shape and Cutting Style **ROUND BRILLIANT**

Measurements **6.48 - 6.51 X 3.90 MM**

GRADING RESULTS

Carat Weight **1.02 CARAT**

Color Grade **E**

Clarity Grade **VVS 2**

Cut Grade **IDEAL**

May 29, 2026
IGI Report Number **LG803699408**
Description **LABORATORY GROWN DIAMOND**
Shape and Cutting Style **ROUND BRILLIANT**
Measurements **6.48 - 6.51 X 3.90 MM**

GRADING RESULTS

Carat Weight **1.02 CARAT**

Color Grade **E**

Clarity Grade **VVS 2**

Cut Grade **IDEAL**

ADDITIONAL GRADING INFORMATION

Polish **EXCELLENT**

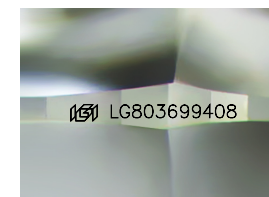
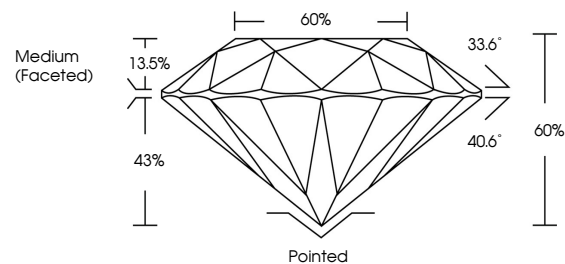
Symmetry **EXCELLENT**

Fluorescence **NONE**

Inscription(s) **IGI LG803699408**

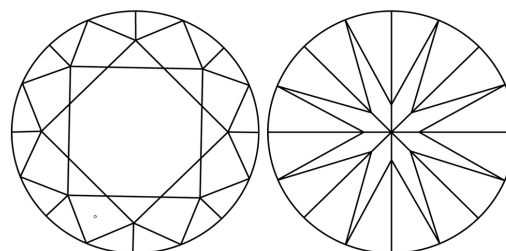
Comments: This Laboratory Grown Diamond was created by Chemical Vapor Deposition (CVD) growth process.
Type IIa

PROPORTIONS



Sample Image Used

CLARITY CHARACTERISTICS



KEY TO SYMBOLS

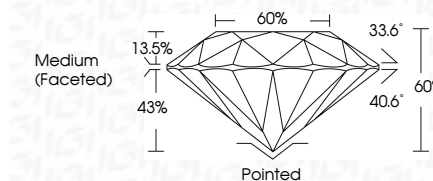
Red symbols indicate internal characteristics.
Green symbols indicate external characteristics.

COLOR

D E F G H I J Faint Very Light Light

CLARITY

FL	IF	VVS ¹⁻²	VS ¹⁻²	SI ¹⁻²	I ¹⁻³
Flawless	Internally Flawless	Very Very Slightly Included	Very Slightly Included	Slightly Included	Included



ADDITIONAL GRADING INFORMATION

Polish **EXCELLENT**

Symmetry **EXCELLENT**

Fluorescence **NONE**

Inscription(s) **IGI LG803699408**

Comments: This Laboratory Grown Diamond was created by Chemical Vapor Deposition (CVD) growth process.
Type IIa



IGI



May 29, 2026	IGI Report No. LG803699408	1.02 CARAT	E	Pointed	EXCELLENT	EXCELLENT	NONE	IGI LG803699408
ROUND BRILLIANT	6.48 - 6.51 X 3.90 MM	Color Grade	VVS 2	Symmetry	EXCELLENT	EXCELLENT	NONE	IGI LG803699408
		Clarity Grade	IDEAL	Fluorescence	EXCELLENT	EXCELLENT	NONE	IGI LG803699408
		Depth	65%	Inscription(s)	EXCELLENT	EXCELLENT	NONE	IGI LG803699408
		Table	65%		EXCELLENT	EXCELLENT	NONE	IGI LG803699408
		Girdle	Medium (Faceted)		EXCELLENT	EXCELLENT	NONE	IGI LG803699408

Comments: This Laboratory Grown Diamond was created by Chemical Vapor Deposition (CVD) growth process.
Type IIa