



ELECTRONIC COPY

LG804608559 Report verification at igi.org



June 1, 2026 IGI Report Number LG804608559 Description LABORATORY GROWN DIAMOND Shape and Cutting Style CUT CORNERED RECTANGULAR MODIFIED BRILLIANT Measurements 10.13 X 7.17 X 4.82 MM GRADING RESULTS Carat Weight 3.08 CARATS Color Grade F Clarity Grade VS 1

LABORATORY GROWN DIAMOND REPORT

June 1, 2026 IGI Report Number LG804608559 Description LABORATORY GROWN DIAMOND Shape and Cutting Style CUT CORNERED RECTANGULAR MODIFIED BRILLIANT Measurements 10.13 X 7.17 X 4.82 MM

GRADING RESULTS

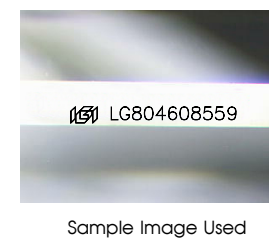
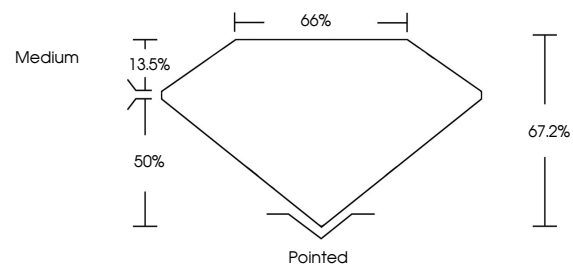
Carat Weight 3.08 CARATS Color Grade F Clarity Grade VS 1

ADDITIONAL GRADING INFORMATION

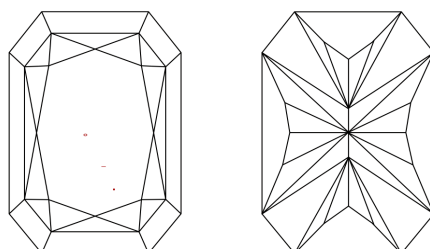
Polish EXCELLENT Symmetry EXCELLENT Fluorescence NONE Inscription(s) LG804608559

Comments: This Laboratory Grown Diamond was created by Chemical Vapor Deposition (CVD) growth process. Type IIa

PROPORTIONS



CLARITY CHARACTERISTICS



KEY TO SYMBOLS

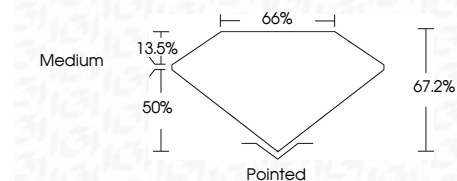
Red symbols indicate internal characteristics. Green symbols indicate external characteristics.

COLOR

D E F G H I J Faint Very Light Light

CLARITY

FL IF VS 1-2 VS 2-3 SI 1-2 I 1-3 Flawless Internally Flawless Very Very Slightly Included Very Slightly Included Slightly Included Included



ADDITIONAL GRADING INFORMATION

Polish EXCELLENT Symmetry EXCELLENT Fluorescence NONE Inscription(s) LG804608559 Comments: This Laboratory Grown Diamond was created by Chemical Vapor Deposition (CVD) growth process. Type IIa



June 1, 2026 IGI Report No LG804608559 CUT CORNERED RECT. MODIFIED BRILLIANT 10.13 X 7.17 X 4.82 MM 3.08 CARATS F VS 1 67.2% 50% Medium Pointed EXCELLENT EXCELLENT NONE LG804608559 Comments: This Laboratory Grown Diamond was created by Chemical Vapor Deposition (CVD) growth process. Type IIa