



ELECTRONIC COPY

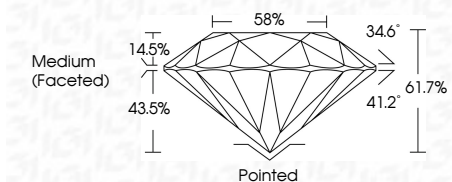
LG804623321
Report verification at igi.org



May 25, 2026
IGI Report Number **LG804623321**
Description **LABORATORY GROWN DIAMOND**
Shape and Cutting Style **ROUND BRILLIANT**
Measurements **8.09 - 8.13 X 5.00 MM**

GRADING RESULTS

Carat Weight **2.02 CARATS**
Color Grade **E**
Clarity Grade **VVS 2**
Cut Grade **IDEAL**

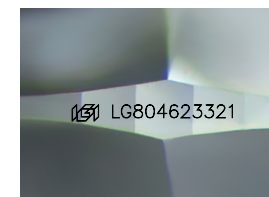


ADDITIONAL GRADING INFORMATION

Polish **EXCELLENT**
Symmetry **EXCELLENT**
Fluorescence **NONE**
Inscription(s) **IGI LG804623321**
Comments: This Laboratory Grown Diamond was created by Chemical Vapor Deposition (CVD) growth process. Type IIa

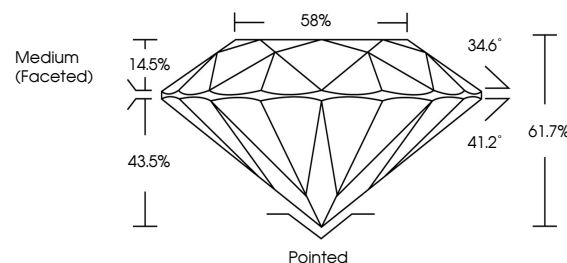


May 25, 2026
IGI Report No LG804623321
ROUND BRILLIANT
2.02 CARATS
E
8.09 - 8.13 X 5.00 MM
Carat Weight
Color Grade
Clarity Grade
Cut Grade
Depth
Table
Girdle
Medium (Faceted)
E
VVS 2
IDEAL
61.7%
58%
Pointed
EXCELLENT
EXCELLENT
NONE
NONE
IGI LG804623321
Comments: This Laboratory Grown Diamond was created by Chemical Vapor Deposition (CVD) growth process. Type IIa

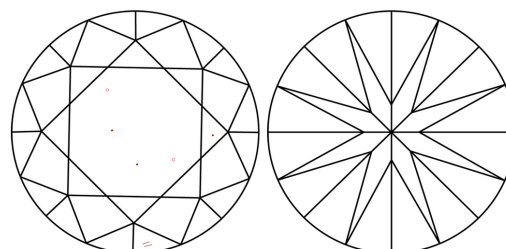


Sample Image Used

PROPORTIONS



CLARITY CHARACTERISTICS



KEY TO SYMBOLS

Red symbols indicate internal characteristics.
Green symbols indicate external characteristics.

COLOR

D E F G H I J Faint Very Light Light

CLARITY

FL	IF	VVS ¹⁻²	VS ¹⁻²	SI ¹⁻²	I ¹⁻³
Flawless	Internally Flawless	Very Very Slightly Included	Very Slightly Included	Slightly Included	Included

