



ELECTRONIC COPY

LG804626179
Report verification at igi.org



June 2, 2026
IGI Report Number LG804626179
Description LABORATORY GROWN DIAMOND
Shape and Cutting Style CUT CORNERED RECTANGULAR MODIFIED BRILLIANT
Measurements 12.36 X 8.48 X 5.58 MM
GRADING RESULTS
Carat Weight 5.06 CARATS
Color Grade E
Clarity Grade VS 1

LABORATORY GROWN DIAMOND REPORT

June 2, 2026
IGI Report Number LG804626179
Description LABORATORY GROWN DIAMOND
Shape and Cutting Style CUT CORNERED RECTANGULAR MODIFIED BRILLIANT
Measurements 12.36 X 8.48 X 5.58 MM

GRADING RESULTS

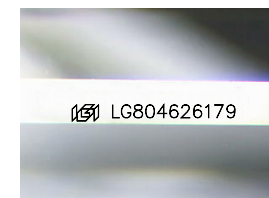
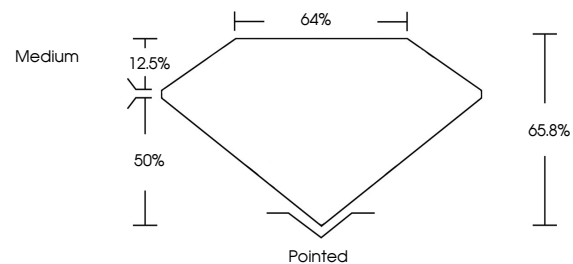
Carat Weight 5.06 CARATS
Color Grade E
Clarity Grade VS 1

ADDITIONAL GRADING INFORMATION

Polish EXCELLENT
Symmetry EXCELLENT
Fluorescence NONE
Inscription(s) LG804626179

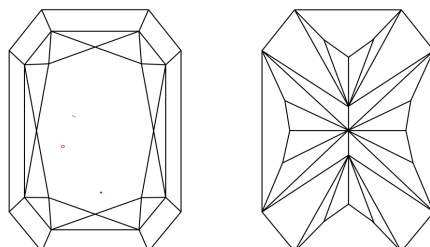
Comments: This Laboratory Grown Diamond was created by Chemical Vapor Deposition (CVD) growth process. Type IIa

PROPORTIONS



Sample Image Used

CLARITY CHARACTERISTICS



KEY TO SYMBOLS

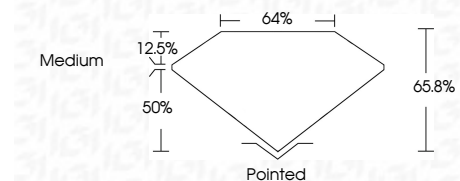
Red symbols indicate internal characteristics.
Green symbols indicate external characteristics.

COLOR

D E F G H I J Faint Very Light Light

CLARITY

FL IF VS 1-2 VS 2-3 SI 1-2 I 1-3
Flawless Internally Flawless Very Very Slightly Included Very Slightly Included Slightly Included Included



ADDITIONAL GRADING INFORMATION

Polish EXCELLENT
Symmetry EXCELLENT
Fluorescence NONE
Inscription(s) LG804626179
Comments: This Laboratory Grown Diamond was created by Chemical Vapor Deposition (CVD) growth process. Type IIa



June 2, 2026
IGI Report No. LG804626179
CUT CORNERED RECT. MODIFIED BRILLIANT
12.36 X 8.48 X 5.58 MM
5.06 CARATS
E
VS 1
65.8%
50%
64%
Medium
Pointed
EXCELLENT
EXCELLENT
NONE
LG804626179
Comments: This Laboratory Grown Diamond was created by Chemical Vapor Deposition (CVD) growth process. Type IIa