



ELECTRONIC COPY

LG804626889 Report verification at igi.org



May 30, 2026 IGI Report Number LG804626889 Description LABORATORY GROWN DIAMOND Shape and Cutting Style CUT CORNERED RECTANGULAR MODIFIED BRILLIANT Measurements 7.13 X 4.95 X 3.37 MM GRADING RESULTS Carat Weight 1.04 CARAT Color Grade E Clarity Grade VS 1

LABORATORY GROWN DIAMOND REPORT

May 30, 2026 IGI Report Number LG804626889 Description LABORATORY GROWN DIAMOND Shape and Cutting Style CUT CORNERED RECTANGULAR MODIFIED BRILLIANT Measurements 7.13 X 4.95 X 3.37 MM

GRADING RESULTS

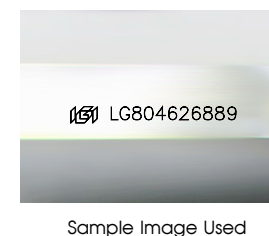
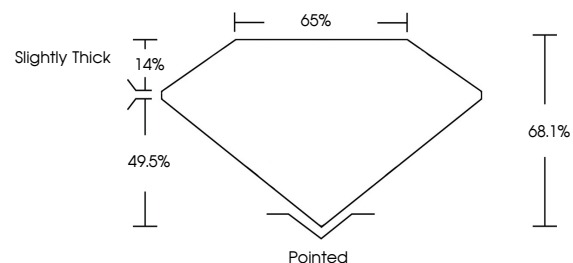
Carat Weight 1.04 CARAT Color Grade E Clarity Grade VS 1

ADDITIONAL GRADING INFORMATION

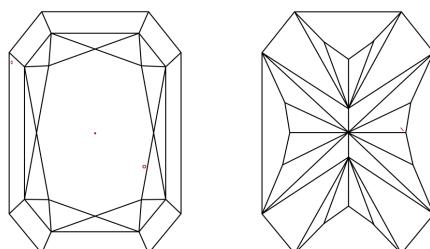
Polish EXCELLENT Symmetry EXCELLENT Fluorescence NONE Inscription(s) LG804626889

Comments: This Laboratory Grown Diamond was created by Chemical Vapor Deposition (CVD) growth process. Type IIa

PROPORTIONS



CLARITY CHARACTERISTICS



KEY TO SYMBOLS

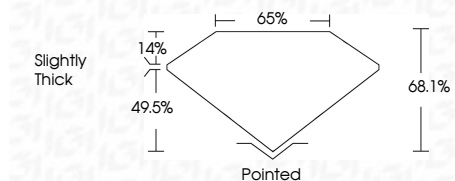
Red symbols indicate internal characteristics. Green symbols indicate external characteristics.

COLOR

D E F G H I J Faint Very Light Light

CLARITY

FL IF VS 1-2 VS 2-2 SI 1-2 I 1-3 Flawless Internally Flawless Very Very Slightly Included Very Slightly Included Slightly Included Included



ADDITIONAL GRADING INFORMATION

Polish EXCELLENT Symmetry EXCELLENT Fluorescence NONE Inscription(s) LG804626889 Comments: This Laboratory Grown Diamond was created by Chemical Vapor Deposition (CVD) growth process. Type IIa



May 30, 2026 IGI Report No. LG804626889 CUT CORNERED RECT. MODIFIED BRILLIANT 1.04 CARAT E VS 1 68.1% 65% Slightly Thick Pointed EXCELLENT EXCELLENT NONE NONE LG804626889 Comments: This Laboratory Grown Diamond was created by Chemical Vapor Deposition (CVD) growth process. Type IIa