



**ELECTRONIC COPY**

LG804627034  
Report verification at igi.org



May 30, 2026

IGI Report Number **LG804627034**

Description **LABORATORY GROWN DIAMOND**

Shape and Cutting Style **ROUND BRILLIANT**

Measurements **6.57 - 6.61 X 3.97 MM**

**GRADING RESULTS**

Carat Weight **1.03 CARAT**

Color Grade **E**

Clarity Grade **VS 1**

Cut Grade **IDEAL**

May 30, 2026

IGI Report Number **LG804627034**

Description **LABORATORY GROWN DIAMOND**

Shape and Cutting Style **ROUND BRILLIANT**

Measurements **6.57 - 6.61 X 3.97 MM**

**GRADING RESULTS**

Carat Weight **1.03 CARAT**

Color Grade **E**

Clarity Grade **VS 1**

Cut Grade **IDEAL**

**ADDITIONAL GRADING INFORMATION**

Polish **EXCELLENT**

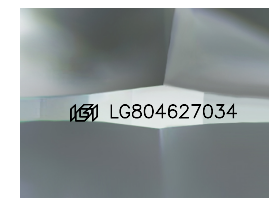
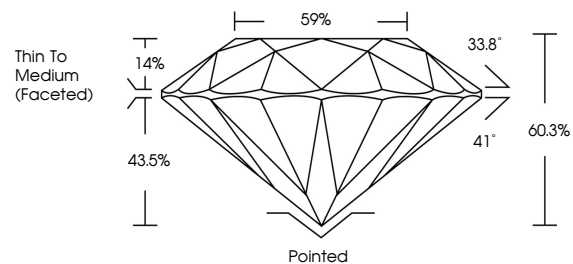
Symmetry **EXCELLENT**

Fluorescence **NONE**

Inscription(s) **IGI LG804627034**

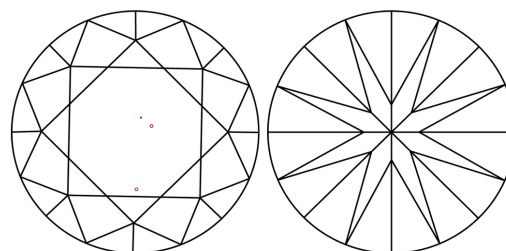
Comments: This Laboratory Grown Diamond was created by Chemical Vapor Deposition (CVD) growth process.  
Type IIa

**PROPORTIONS**



Sample Image Used

**CLARITY CHARACTERISTICS**



**KEY TO SYMBOLS**

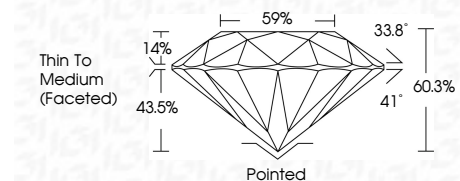
Red symbols indicate internal characteristics.  
Green symbols indicate external characteristics.

**COLOR**

D E F G H I J Faint Very Light Light

**CLARITY**

| FL       | IF                  | VS <sup>1-2</sup>           | VS <sup>1-2</sup>      | SI <sup>1-2</sup> | I <sup>1-3</sup> |
|----------|---------------------|-----------------------------|------------------------|-------------------|------------------|
| Flawless | Internally Flawless | Very Very Slightly Included | Very Slightly Included | Slightly Included | Included         |



**ADDITIONAL GRADING INFORMATION**

Polish **EXCELLENT**

Symmetry **EXCELLENT**

Fluorescence **NONE**

Inscription(s) **IGI LG804627034**

Comments: This Laboratory Grown Diamond was created by Chemical Vapor Deposition (CVD) growth process.  
Type IIa



**IGI**



|                           |                       |             |               |           |       |       |                          |         |           |           |              |                 |
|---------------------------|-----------------------|-------------|---------------|-----------|-------|-------|--------------------------|---------|-----------|-----------|--------------|-----------------|
| May 30, 2026              | 1.03 CARAT            | E           | VS 1          | IDEAL     | 60.3% | 59%   | Thin To Medium (Faceted) | Pointed | EXCELLENT | EXCELLENT | NONE         | IGI LG804627034 |
| IGI Report No LG804627034 | 6.57 - 6.61 X 3.97 MM | Color Grade | Clarity Grade | Cut Grade | Depth | Table | Girdle                   | Culet   | Polish    | Symmetry  | Fluorescence | Inscription(s)  |
| ROUND BRILLIANT           |                       |             |               |           |       |       |                          |         |           |           |              |                 |

Comments: This Laboratory Grown Diamond was created by Chemical Vapor Deposition (CVD) growth process.  
Type IIa