



ELECTRONIC COPY

LG804629337
Report verification at igi.org



May 27, 2026

IGI Report Number **LG804629337**

Description **LABORATORY GROWN DIAMOND**

Shape and Cutting Style **ROUND BRILLIANT**

Measurements **9.39 - 9.44 X 5.63 MM**

GRADING RESULTS

Carat Weight **3.03 CARATS**

Color Grade **E**

Clarity Grade **VVS 2**

Cut Grade **IDEAL**

May 27, 2026

IGI Report Number **LG804629337**

Description **LABORATORY GROWN DIAMOND**

Shape and Cutting Style **ROUND BRILLIANT**

Measurements **9.39 - 9.44 X 5.63 MM**

GRADING RESULTS

Carat Weight **3.03 CARATS**

Color Grade **E**

Clarity Grade **VVS 2**

Cut Grade **IDEAL**

ADDITIONAL GRADING INFORMATION

Polish **EXCELLENT**

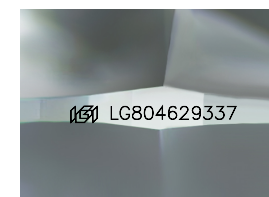
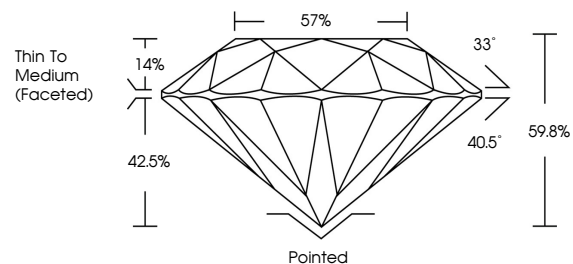
Symmetry **EXCELLENT**

Fluorescence **NONE**

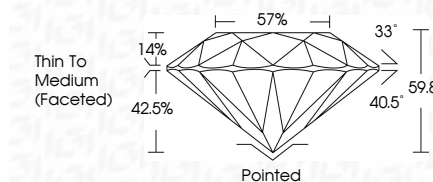
Inscription(s) **IGI LG804629337**

Comments: This Laboratory Grown Diamond was created by Chemical Vapor Deposition (CVD) growth process. Type IIa

PROPORTIONS



Sample Image Used



COLOR

D E F G H I J Faint Very Light Light

CLARITY

FL	IF	VS ¹⁻²	VS ¹⁻²	SI ¹⁻²	I ¹⁻³
Flawless	Internally Flawless	Very Very Slightly Included	Very Slightly Included	Slightly Included	Included

ADDITIONAL GRADING INFORMATION

Polish **EXCELLENT**

Symmetry **EXCELLENT**

Fluorescence **NONE**

Inscription(s) **IGI LG804629337**

Comments: This Laboratory Grown Diamond was created by Chemical Vapor Deposition (CVD) growth process. Type IIa



IGI



May 27, 2026	3.03 CARATS	E	VVS 2	IDEAL	59.8%	57%	Pointed	EXCELLENT	EXCELLENT	NONE	IGI LG804629337
IGI Report No LG804629337	Carat Weight	Color Grade	Clarity Grade	Cut Grade	Depth	Table	Thin To Medium (Faceted)	Polish	Symmetry	Fluorescence	Inscription(s)
ROUND BRILLIANT	9.39 - 9.44 X 5.63 MM	E	VVS 2	IDEAL	59.8%	57%	Pointed	EXCELLENT	EXCELLENT	NONE	IGI LG804629337

Comments: This Laboratory Grown Diamond was created by Chemical Vapor Deposition (CVD) growth process. Type IIa