



**ELECTRONIC COPY**

LG804648015  
Report verification at igi.org



May 29, 2026

IGI Report Number **LG804648015**

Description **LABORATORY GROWN DIAMOND**

Shape and Cutting Style **PEAR BRILLIANT**

Measurements **14.75 X 8.91 X 5.19 MM**

**GRADING RESULTS**

Carat Weight **4.07 CARATS**

Color Grade **FANCY VIVID PINK**

Clarity Grade **VS 1**

**LABORATORY GROWN DIAMOND REPORT**

May 29, 2026

IGI Report Number **LG804648015**

Description **LABORATORY GROWN DIAMOND**

Shape and Cutting Style **PEAR BRILLIANT**

Measurements **14.75 X 8.91 X 5.19 MM**

**GRADING RESULTS**

Carat Weight **4.07 CARATS**

Color Grade **FANCY VIVID PINK**

Clarity Grade **VS 1**

**ADDITIONAL GRADING INFORMATION**

Polish **EXCELLENT**

Symmetry **EXCELLENT**

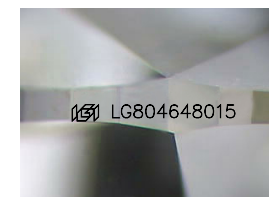
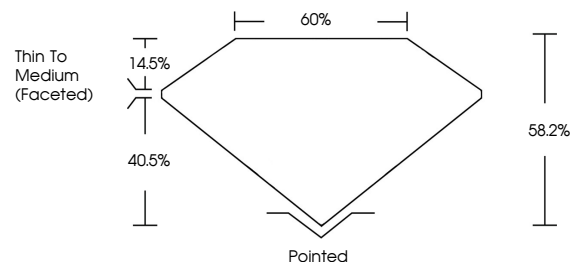
Fluorescence **STRONG**

Inscription(s) **IGI LG804648015**

Comments: This Laboratory Grown Diamond was created by Chemical Vapor Deposition (CVD) growth process.

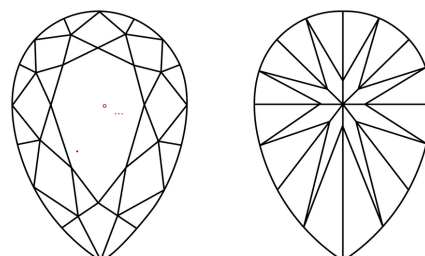
Indications of post-growth treatment.

**PROPORTIONS**



Sample Image Used

**CLARITY CHARACTERISTICS**



**KEY TO SYMBOLS**

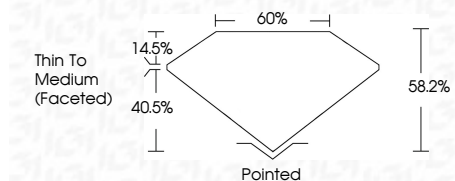
Red symbols indicate internal characteristics.  
Green symbols indicate external characteristics.

**COLOR**

D E F G H I J Faint Very Light Light

**CLARITY**

FL	IF	VS <sup>1-2</sup>	VS <sup>1-2</sup>	SI <sup>1-2</sup>	I <sup>1-3</sup>
Flawless	Internally Flawless	Very Very Slightly Included	Very Slightly Included	Slightly Included	Included



**ADDITIONAL GRADING INFORMATION**

Polish **EXCELLENT**

Symmetry **EXCELLENT**

Fluorescence **STRONG**

Inscription(s) **IGI LG804648015**

Comments: This Laboratory Grown Diamond was created by Chemical Vapor Deposition (CVD) growth process. Indications of post-growth treatment.



May 29, 2026  
IGI Report No LG804648015  
PEAR BRILLIANT

4.07 CARATS  
Carat Weight  
FANCY VIVID PINK  
Color Grade

VS 1  
Depth  
58.2%  
40.5%  
Thin To Medium (Faceted)  
Grades

Pointed  
EXCELLENT  
EXCELLENT  
STRONG  
Inscription(s)  
IGI LG804648015

Comments: This Laboratory Grown Diamond was created by Chemical Vapor Deposition (CVD) growth process. Indications of post-growth treatment.