



ELECTRONIC COPY

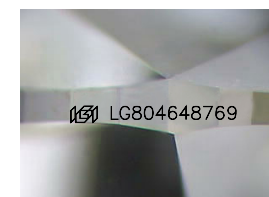
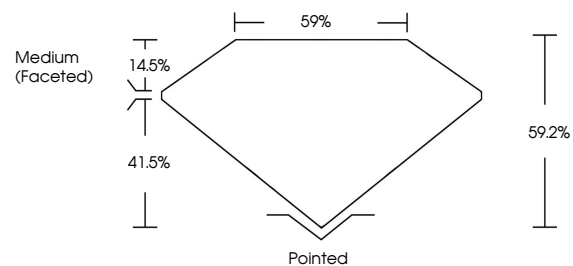
LG804648769
Report verification at igi.org



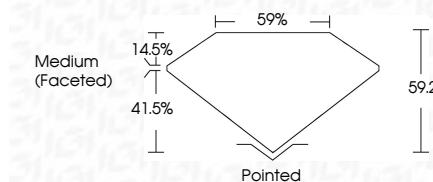
May 25, 2026
IGI Report Number **LG804648769**
Description **LABORATORY GROWN DIAMOND**
Shape and Cutting Style **HEART BRILLIANT**
Measurements **12.46 X 13.82 X 8.18 MM**
GRADING RESULTS
Carat Weight **8.08 CARATS**
Color Grade **E**
Clarity Grade **VVS 2**

May 25, 2026
IGI Report Number **LG804648769**
Description **LABORATORY GROWN DIAMOND**
Shape and Cutting Style **HEART BRILLIANT**
Measurements **12.46 X 13.82 X 8.18 MM**
GRADING RESULTS
Carat Weight **8.08 CARATS**
Color Grade **E**
Clarity Grade **VVS 2**

PROPORTIONS



Sample Image Used



ADDITIONAL GRADING INFORMATION

Polish **EXCELLENT**
Symmetry **EXCELLENT**
Fluorescence **NONE**
Inscription(s) **IGI LG804648769**

Comments: This Laboratory Grown Diamond was created by Chemical Vapor Deposition (CVD) growth process.
Type IIa

ADDITIONAL GRADING INFORMATION

Polish **EXCELLENT**
Symmetry **EXCELLENT**
Fluorescence **NONE**
Inscription(s) **IGI LG804648769**
Comments: This Laboratory Grown Diamond was created by Chemical Vapor Deposition (CVD) growth process.
Type IIa

COLOR

D E F G H I J Faint Very Light Light

CLARITY

FL	IF	VVS ¹⁻²	VS ¹⁻²	SI ¹⁻²	I ¹⁻³
Flawless	Internally Flawless	Very Very Slightly Included	Very Slightly Included	Slightly Included	Included



IGI



May 25, 2026
IGI Report No **LG804648769**
HEART BRILLIANT
12.46 X 13.82 X 8.18 MM
8.08 CARATS
E
VVS 2
59.2%
59%
Medium (Faceted)
Pointed
EXCELLENT
EXCELLENT
NONE
IGI LG804648769
Comments: This Laboratory Grown Diamond was created by Chemical Vapor Deposition (CVD) growth process.
Type IIa