



ELECTRONIC COPY

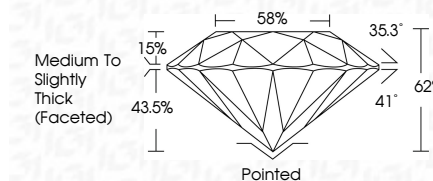
LG804650551
Report verification at igi.org



June 9, 2026
IGI Report Number **LG804650551**
Description **LABORATORY GROWN DIAMOND**
Shape and Cutting Style **ROUND BRILLIANT**
Measurements **8.06 - 8.13 X 5.01 MM**

GRADING RESULTS

Carat Weight **2.01 CARATS**
Color Grade **E**
Clarity Grade **VS 1**
Cut Grade **IDEAL**



ADDITIONAL GRADING INFORMATION

Polish **EXCELLENT**
Symmetry **EXCELLENT**
Fluorescence **NONE**
Inscription(s) **IGI LG804650551**
Comments: This Laboratory Grown Diamond was created by Chemical Vapor Deposition (CVD) growth process. Type IIa



June 9, 2026
IGI Report No. LG804650551
ROUND BRILLIANT
2.01 CARATS
E
8.06 - 8.13 X 5.01 MM
Carat Weight
Color Grade
Clarity Grade
Cut Grade
Depth
Table
Girdle
Medium To Slightly Thick (Faceted)
Culet
Polish
Symmetry
Fluorescence
Inscriptions(s)
Pointed
EXCELLENT
EXCELLENT
NONE
IGI LG804650551
Comments: This Laboratory Grown Diamond was created by Chemical Vapor Deposition (CVD) growth process. Type IIa

June 9, 2026
IGI Report Number **LG804650551**
Description **LABORATORY GROWN DIAMOND**
Shape and Cutting Style **ROUND BRILLIANT**
Measurements **8.06 - 8.13 X 5.01 MM**

GRADING RESULTS

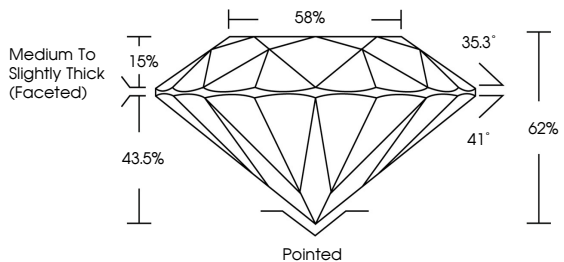
Carat Weight **2.01 CARATS**
Color Grade **E**
Clarity Grade **VS 1**
Cut Grade **IDEAL**

ADDITIONAL GRADING INFORMATION

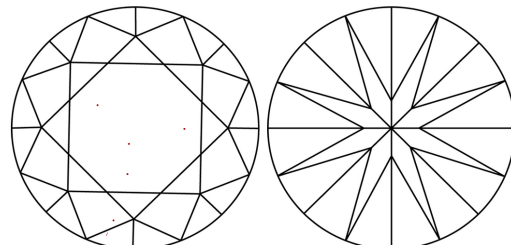
Polish **EXCELLENT**
Symmetry **EXCELLENT**
Fluorescence **NONE**
Inscription(s) **IGI LG804650551**

Comments: This Laboratory Grown Diamond was created by Chemical Vapor Deposition (CVD) growth process. Type IIa

PROPORTIONS

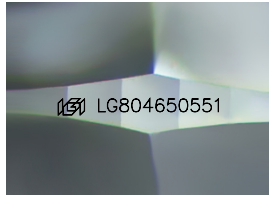


CLARITY CHARACTERISTICS



KEY TO SYMBOLS

Red symbols indicate internal characteristics.
Green symbols indicate external characteristics.



Sample Image Used

COLOR

D	E	F	G	H	I	J	Faint	Very Light	Light
---	---	---	---	---	---	---	-------	------------	-------

CLARITY

FL	IF	VS ¹⁻²	VS ¹⁻²	SI ¹⁻²	I ¹⁻³
Flawless	Internally Flawless	Very Very Slightly Included	Very Slightly Included	Slightly Included	Included

