



ELECTRONIC COPY

LG804662339
Report verification at igi.org



June 22, 2026
IGI Report Number **LG804662339**
Description **LABORATORY GROWN DIAMOND**
Shape and Cutting Style **ROUND BRILLIANT**
Measurements **9.01 - 9.06 X 5.35 MM**
GRADING RESULTS
Carat Weight **2.70 CARATS**
Color Grade **FANCY LIGHT PINKISH BROWN**
Clarity Grade **VVS 2**
Cut Grade **VERY GOOD**

June 22, 2026
IGI Report Number **LG804662339**
Description **LABORATORY GROWN DIAMOND**
Shape and Cutting Style **ROUND BRILLIANT**
Measurements **9.01 - 9.06 X 5.35 MM**

GRADING RESULTS

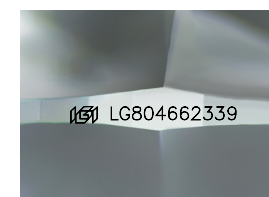
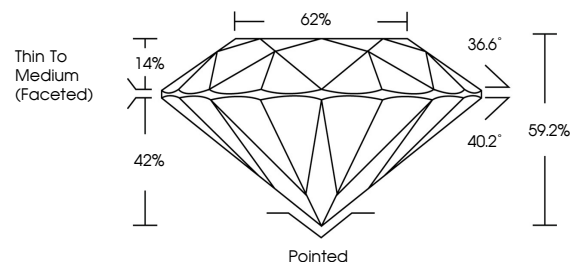
Carat Weight **2.70 CARATS**
Color Grade **FANCY LIGHT PINKISH BROWN**
Clarity Grade **VVS 2**
Cut Grade **VERY GOOD**

ADDITIONAL GRADING INFORMATION

Polish **VERY GOOD**
Symmetry **VERY GOOD**
Fluorescence **SLIGHT**
Inscription(s) **IGI LG804662339**

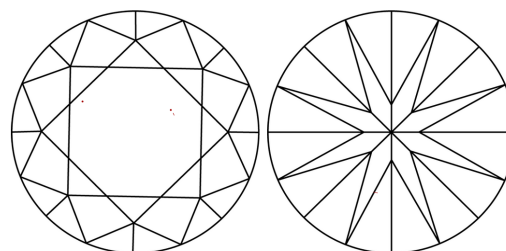
Comments: This Laboratory Grown Diamond was created by Chemical Vapor Deposition (CVD) growth process.
Indications of post-growth treatment.

PROPORTIONS



Sample Image Used

CLARITY CHARACTERISTICS



KEY TO SYMBOLS

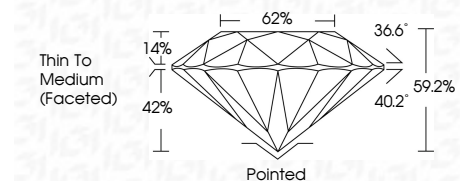
Red symbols indicate internal characteristics.
Green symbols indicate external characteristics.

COLOR

D E F G H I J Faint Very Light Light

CLARITY

FL	IF	VVS ¹⁻²	VS ¹⁻²	SI ¹⁻²	I ¹⁻³
Flawless	Internally Flawless	Very Very Slightly Included	Very Slightly Included	Slightly Included	Included



ADDITIONAL GRADING INFORMATION

Polish **VERY GOOD**
Symmetry **VERY GOOD**
Fluorescence **SLIGHT**
Inscription(s) **IGI LG804662339**
Comments: This Laboratory Grown Diamond was created by Chemical Vapor Deposition (CVD) growth process.
Indications of post-growth treatment.



June 22, 2026
IGI Report No LG804662339
ROUND BRILLIANT
2.70 CARATS
Carat Weight
Color Grade FANCY LIGHT PINKISH BROWN
Clarity Grade VVS 2
Cut Grade VERY GOOD
Depth 59.2%
Table 62%
Girdle Thin To Medium (Faceted)
Culet Pointed
Polish VERY GOOD
Symmetry VERY GOOD
Fluorescence SLIGHT
Inscriptions(s) IGI LG804662339
Comments: This Laboratory Grown Diamond was created by Chemical Vapor Deposition (CVD) growth process.
Indications of post-growth treatment.