



ELECTRONIC COPY

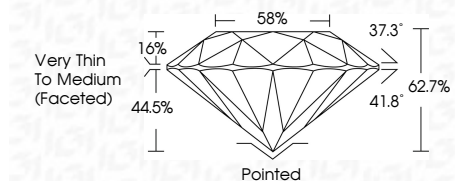
LG804662340
Report verification at igi.org



June 22, 2026
IGI Report Number **LG804662340**
Description **LABORATORY GROWN DIAMOND**
Shape and Cutting Style **ROUND BRILLIANT**
Measurements **9.18 - 9.27 X 5.78 MM**

GRADING RESULTS

Carat Weight **2.97 CARATS**
Color Grade **FANCY LIGHT PINKISH BROWN**
Clarity Grade **VVS 2**
Cut Grade **VERY GOOD**



ADDITIONAL GRADING INFORMATION

Polish **VERY GOOD**
Symmetry **VERY GOOD**
Fluorescence **SLIGHT**
Inscription(s) **IGI LG804662340**
Comments: This Laboratory Grown Diamond was created by Chemical Vapor Deposition (CVD) growth process. Indications of post-growth treatment.



June 22, 2026
IGI Report No. LG804662340
ROUND BRILLIANT
9.18 - 9.27 X 5.78 MM
2.97 CARATS
FANCY LIGHT PINKISH BROWN
VVS 2
VERY GOOD
62.7%
58%
Very Thin To Medium (Faceted)
Pointed
VERY GOOD
VERY GOOD
SLIGHT
IGI LG804662340
Comments: This Laboratory Grown Diamond was created by Chemical Vapor Deposition (CVD) growth process. Indications of post-growth treatment.

June 22, 2026
IGI Report Number **LG804662340**
Description **LABORATORY GROWN DIAMOND**
Shape and Cutting Style **ROUND BRILLIANT**
Measurements **9.18 - 9.27 X 5.78 MM**

GRADING RESULTS

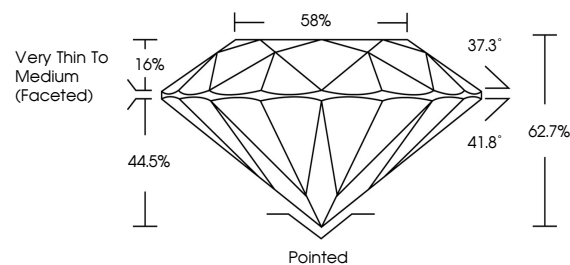
Carat Weight **2.97 CARATS**
Color Grade **FANCY LIGHT PINKISH BROWN**
Clarity Grade **VVS 2**
Cut Grade **VERY GOOD**

ADDITIONAL GRADING INFORMATION

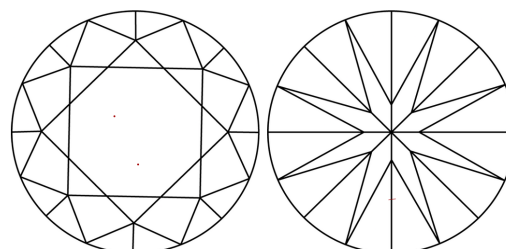
Polish **VERY GOOD**
Symmetry **VERY GOOD**
Fluorescence **SLIGHT**
Inscription(s) **IGI LG804662340**

Comments: This Laboratory Grown Diamond was created by Chemical Vapor Deposition (CVD) growth process. Indications of post-growth treatment.

PROPORTIONS

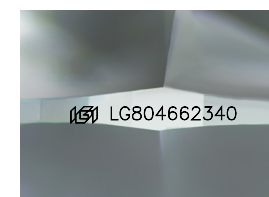


CLARITY CHARACTERISTICS



KEY TO SYMBOLS

Red symbols indicate internal characteristics.
Green symbols indicate external characteristics.



Sample Image Used

COLOR

D E F G H I J Faint Very Light Light

CLARITY

FL	IF	VVS ¹⁻²	VS ¹⁻²	SI ¹⁻²	I ¹⁻³
Flawless	Internally Flawless	Very Very Slightly Included	Very Slightly Included	Slightly Included	Included

