



ELECTRONIC COPY

LG804675120
Report verification at igi.org



May 27, 2026

IGI Report Number **LG804675120**

Description **LABORATORY GROWN DIAMOND**

Shape and Cutting Style **ROUND BRILLIANT**

Measurements **6.68 - 6.73 X 4.19 MM**

GRADING RESULTS

Carat Weight **1.19 CARAT**

Color Grade **H**

Clarity Grade **VS 1**

Cut Grade **VERY GOOD**

May 27, 2026
IGI Report Number **LG804675120**
Description **LABORATORY GROWN DIAMOND**
Shape and Cutting Style **ROUND BRILLIANT**
Measurements **6.68 - 6.73 X 4.19 MM**

GRADING RESULTS

Carat Weight **1.19 CARAT**

Color Grade **H**

Clarity Grade **VS 1**

Cut Grade **VERY GOOD**

ADDITIONAL GRADING INFORMATION

Polish **VERY GOOD**

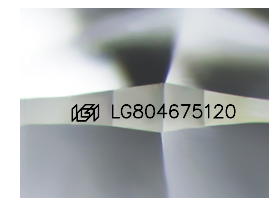
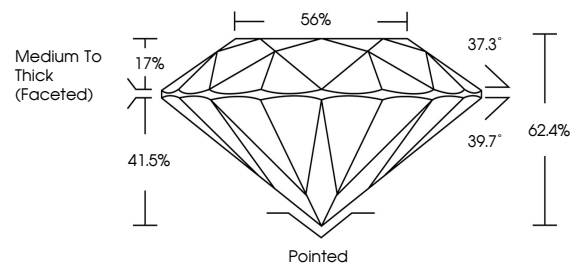
Symmetry **GOOD**

Fluorescence **NONE**

Inscription(s) **IGI LG804675120**

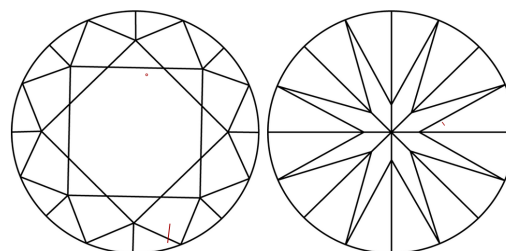
Comments: This Laboratory Grown Diamond was created by Chemical Vapor Deposition (CVD) growth process.
Type IIa

PROPORTIONS



Sample Image Used

CLARITY CHARACTERISTICS



KEY TO SYMBOLS

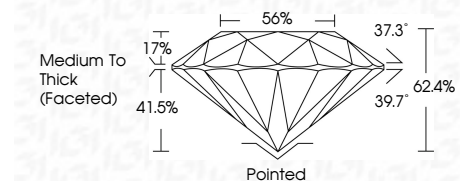
Red symbols indicate internal characteristics.
Green symbols indicate external characteristics.

COLOR

D E F G H I J Faint Very Light Light

CLARITY

FL	IF	VS ¹⁻²	VS ¹⁻²	SI ¹⁻²	I ¹⁻³
Flawless	Internally Flawless	Very Very Slightly Included	Very Slightly Included	Slightly Included	Included



ADDITIONAL GRADING INFORMATION

Polish **VERY GOOD**

Symmetry **GOOD**

Fluorescence **NONE**

Inscription(s) **IGI LG804675120**

Comments: This Laboratory Grown Diamond was created by Chemical Vapor Deposition (CVD) growth process.
Type IIa



IGI



May 27, 2026	IGI Report No LG804675120	1.19 CARAT	H	VS 1	62.4%	56%	Medium To Thick (Faceted)	Pointed	VERY GOOD	GOOD	NONE	IGI LG804675120
ROUND BRILLIANT	6.68 - 6.73 X 4.19 MM	Color Grade	Cut Grade	Depth	Table	Girdle	Culet	Polish	Symmetry	Fluorescence	Inscription(s)	Comments: This Laboratory Grown Diamond was created by Chemical Vapor Deposition (CVD) growth process. Type IIa