



ELECTRONIC COPY

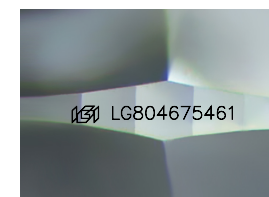
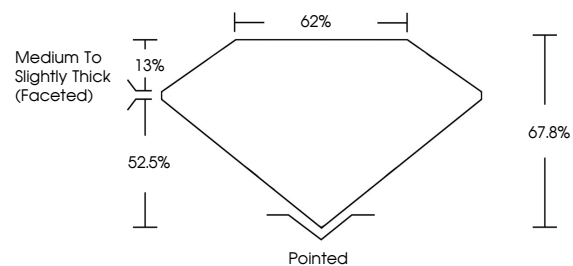
LG804675461
Report verification at igi.org



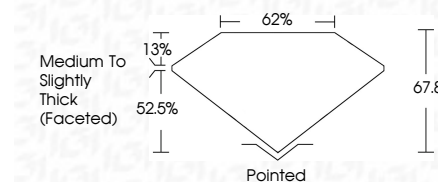
May 29, 2026
IGI Report Number **LG804675461**
Description **LABORATORY GROWN DIAMOND**
Shape and Cutting Style **CUSHION MODIFIED BRILLIANT**
Measurements **10.79 X 7.36 X 4.99 MM**
GRADING RESULTS
Carat Weight **3.02 CARATS**
Color Grade **E**
Clarity Grade **VS 1**

May 29, 2026
IGI Report Number **LG804675461**
Description **LABORATORY GROWN DIAMOND**
Shape and Cutting Style **CUSHION MODIFIED BRILLIANT**
Measurements **10.79 X 7.36 X 4.99 MM**
GRADING RESULTS
Carat Weight **3.02 CARATS**
Color Grade **E**
Clarity Grade **VS 1**

PROPORTIONS



Sample Image Used



ADDITIONAL GRADING INFORMATION

Polish **EXCELLENT**
Symmetry **EXCELLENT**
Fluorescence **NONE**
Inscription(s) **IGI LG804675461**

Comments: This Laboratory Grown Diamond was created by Chemical Vapor Deposition (CVD) growth process.
Type IIa

ADDITIONAL GRADING INFORMATION

Polish **EXCELLENT**
Symmetry **EXCELLENT**
Fluorescence **NONE**
Inscription(s) **IGI LG804675461**
Comments: This Laboratory Grown Diamond was created by Chemical Vapor Deposition (CVD) growth process.
Type IIa

COLOR

D E F G H I J Faint Very Light Light

CLARITY

FL	IF	VS ¹⁻²	VS ¹⁻²	SI ¹⁻²	I ¹⁻³
Flawless	Internally Flawless	Very Very Slightly Included	Very Slightly Included	Slightly Included	Included



IGI



May 29, 2026
IGI Report No **LG804675461**
CUSHION MODIFIED BRILLIANT
3.02 CARATS
E
3.02 CARATS
E
10.79 X 7.36 X 4.99 MM
Color Grade
Clarity Grade
Table
Girdle
Medium to Slightly Thick (Faceted)
Culet
Polish
Symmetry
Fluorescence
Inscription(s)
Pointed
EXCELLENT
EXCELLENT
NONE
IGI LG804675461
Comments: This Laboratory Grown Diamond was created by Chemical Vapor Deposition (CVD) growth process.
Type IIa