



ELECTRONIC COPY

LABORATORY GROWN DIAMOND REPORT

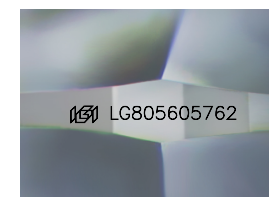
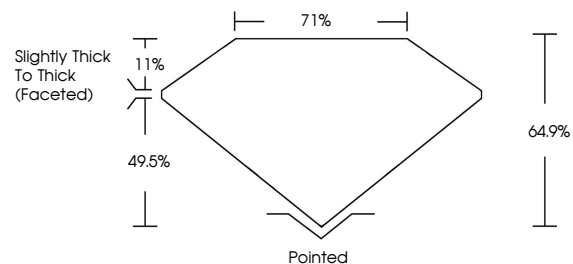
May 28, 2026 IGI Report Number LG805605762 Description LABORATORY GROWN DIAMOND Shape and Cutting Style CUSHION MODIFIED BRILLIANT Measurements 6.44 X 5.52 X 3.58 MM GRADING RESULTS Carat Weight 1.01 CARAT Color Grade D Clarity Grade VVS 2 Cut Grade VERY GOOD

ADDITIONAL GRADING INFORMATION

Polish VERY GOOD Symmetry VERY GOOD Fluorescence NONE Inscription(s) IGI LG805605762

Comments: This Laboratory Grown Diamond was created by Chemical Vapor Deposition (CVD) growth process. Type IIa

PROPORTIONS



Sample Image Used

COLOR

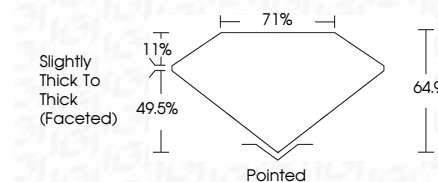
D E F G H I J Faint Very Light Light

CLARITY

FL IF VVS 1-2 VS 1-2 SI 1-2 I 1-3 Flawless Internally Flawless Very Very Slightly Included Very Slightly Included Slightly Included Included



May 28, 2026 IGI Report Number LG805605762 Description LABORATORY GROWN DIAMOND Shape and Cutting Style CUSHION MODIFIED BRILLIANT Measurements 6.44 X 5.52 X 3.58 MM GRADING RESULTS Carat Weight 1.01 CARAT Color Grade D Clarity Grade VVS 2 Cut Grade VERY GOOD



ADDITIONAL GRADING INFORMATION

Polish VERY GOOD Symmetry VERY GOOD Fluorescence NONE Inscription(s) IGI LG805605762 Comments: This Laboratory Grown Diamond was created by Chemical Vapor Deposition (CVD) growth process. Type IIa



May 28, 2026 IGI Report No LG805605762 CUSHION MODIFIED BRILLIANT 6.44 X 5.52 X 3.58 MM 1.01 CARAT D VVS 2 VERY GOOD 64.9% 71% Slightly Thick To Thick (Faceted) Pointed VERY GOOD VERY GOOD VERY GOOD NONE NONE IGI LG805605762 Comments: This Laboratory Grown Diamond was created by Chemical Vapor Deposition (CVD) growth process. Type IIa