



May 29, 2026

IGI Report Number **LG805617386**

HEART BRILLIANT

LABORATORY GROWN DIAMOND

6.06 X 6.47 X 3.80 MM

Carat Weight **0.87 CARAT**

Color Grade **FANCY VIVID GREEN**

Clarity Grade **VS 2**

Polish **EXCELLENT**

Symmetry **VERY GOOD**

Fluorescence **NONE**

Inscription(s) **IGI LG805617386**

Comments: This Laboratory Grown Diamond was created by Chemical Vapor Deposition (CVD) growth process. Indications of post-growth treatment.

LABORATORY GROWN DIAMOND REPORT

May 29, 2026

IGI Report Number

LG805617386

Description

LABORATORY GROWN DIAMOND

Shape and Cutting Style

HEART BRILLIANT

Measurements

6.06 X 6.47 X 3.80 MM

GRADING RESULTS

Carat Weight

0.87 CARAT

Color Grade

FANCY VIVID GREEN

Clarity Grade

VS 2

ADDITIONAL GRADING INFORMATION

Polish

EXCELLENT

Symmetry

VERY GOOD

Fluorescence

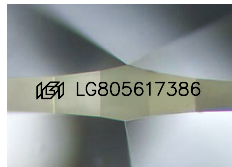
NONE

Inscription(s)

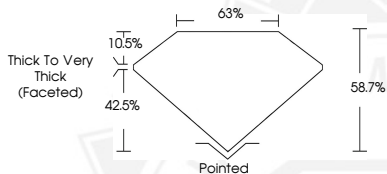
IGI LG805617386

Comments: This Laboratory Grown Diamond was created by Chemical Vapor Deposition (CVD) growth process.

Indications of post-growth treatment.



Sample Image Used



May 29, 2026

IGI Report Number **LG805617386**

HEART BRILLIANT

LABORATORY GROWN DIAMOND

6.06 X 6.47 X 3.80 MM

Carat Weight **0.87 CARAT**

Color Grade **FANCY VIVID GREEN**

Clarity Grade **VS 2**

Polish **EXCELLENT**

Symmetry **VERY GOOD**

Fluorescence **NONE**

Inscription(s) **IGI LG805617386**

Comments: This Laboratory Grown Diamond was created by Chemical Vapor Deposition (CVD) growth process. Indications of post-growth treatment.



THIS DOCUMENT WAS PRODUCED WITH THE FOLLOWING SECURITY MEASURES: SPECIAL DOCUMENT PAPER, INK SCREENS, WATERMARK, BACKGROUND DESIGNS, HOLOGRAM AND OTHER SECURITY FEATURES NOT LISTED AND DO EXCEED DOCUMENT SECURITY INDUSTRY GUIDELINES.