



**ELECTRONIC COPY**

LG805628731  
Report verification at igi.org



June 2, 2026

IGI Report Number **LG805628731**

Description **LABORATORY GROWN DIAMOND**

Shape and Cutting Style **ROUND BRILLIANT**

Measurements **6.56 - 6.59 X 4.03 MM**

**GRADING RESULTS**

Carat Weight **1.07 CARAT**

Color Grade **E**

Clarity Grade **VVS 2**

Cut Grade **IDEAL**

June 2, 2026

IGI Report Number **LG805628731**

Description **LABORATORY GROWN DIAMOND**

Shape and Cutting Style **ROUND BRILLIANT**

Measurements **6.56 - 6.59 X 4.03 MM**

**GRADING RESULTS**

Carat Weight **1.07 CARAT**

Color Grade **E**

Clarity Grade **VVS 2**

Cut Grade **IDEAL**

**ADDITIONAL GRADING INFORMATION**

Polish **EXCELLENT**

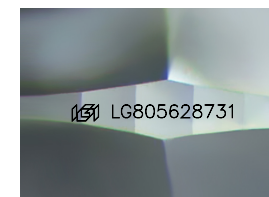
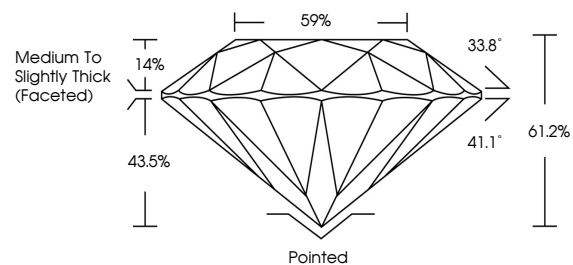
Symmetry **EXCELLENT**

Fluorescence **NONE**

Inscription(s) **IGI LG805628731**

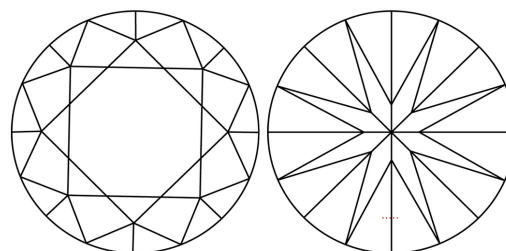
Comments: This Laboratory Grown Diamond was created by Chemical Vapor Deposition (CVD) growth process. Type IIa

**PROPORTIONS**



Sample Image Used

**CLARITY CHARACTERISTICS**



**KEY TO SYMBOLS**

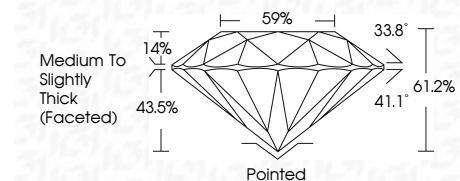
Red symbols indicate internal characteristics.  
Green symbols indicate external characteristics.

**COLOR**

D E F G H I J Faint Very Light Light

**CLARITY**

FL	IF	VVS <sup>1-2</sup>	VS <sup>1-2</sup>	SI <sup>1-2</sup>	I <sup>1-3</sup>
Flawless	Internally Flawless	Very Very Slightly Included	Very Slightly Included	Slightly Included	Included



**ADDITIONAL GRADING INFORMATION**

Polish **EXCELLENT**

Symmetry **EXCELLENT**

Fluorescence **NONE**

Inscription(s) **IGI LG805628731**

Comments: This Laboratory Grown Diamond was created by Chemical Vapor Deposition (CVD) growth process. Type IIa



**IGI**



June 2, 2026	IGI Report No. LG805628731	1.07 CARAT	E	Pointed	EXCELLENT	EXCELLENT	NONE	IGI LG805628731
ROUND BRILLIANT	6.56 - 6.59 X 4.03 MM	Color Grade	VVS 2	Cut Grade	IDEAL	61.2%	Medium To Slightly Thick (Faceted)	
		Clarity Grade	IDEAL					
		Depth						
		Table						
		Grade						
		Polish						
		Symmetry						
		Fluorescence						
		Inscription(s)						

Comments: This Laboratory Grown Diamond was created by Chemical Vapor Deposition (CVD) growth process. Type IIa