



ELECTRONIC COPY

LG805631101
Report verification at igi.org



June 2, 2026
IGI Report Number LG805631101
Description LABORATORY GROWN DIAMOND
Shape and Cutting Style SQUARE CUSHION MODIFIED BRILLIANT
Measurements 6.57 X 6.57 X 3.87 MM
GRADING RESULTS
Carat Weight 1.51 CARAT
Color Grade FANCY INTENSE YELLOW
Clarity Grade VVS 2

LABORATORY GROWN DIAMOND REPORT

June 2, 2026
IGI Report Number LG805631101
Description LABORATORY GROWN DIAMOND
Shape and Cutting Style SQUARE CUSHION MODIFIED BRILLIANT
Measurements 6.57 X 6.57 X 3.87 MM

GRADING RESULTS

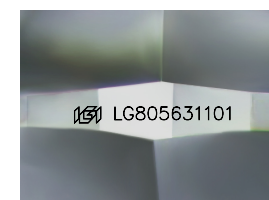
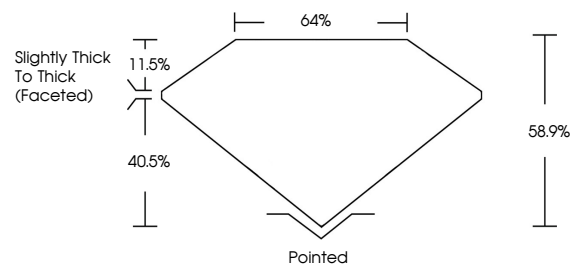
Carat Weight 1.51 CARAT
Color Grade FANCY INTENSE YELLOW
Clarity Grade VVS 2

ADDITIONAL GRADING INFORMATION

Polish EXCELLENT
Symmetry EXCELLENT
Fluorescence NONE
Inscription(s) IGI LG805631101

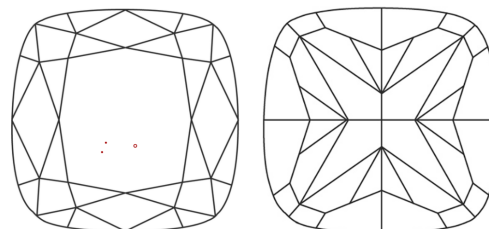
Comments: This Laboratory Grown Diamond was created by Chemical Vapor Deposition (CVD) growth process.

PROPORTIONS



Sample Image Used

CLARITY CHARACTERISTICS



KEY TO SYMBOLS

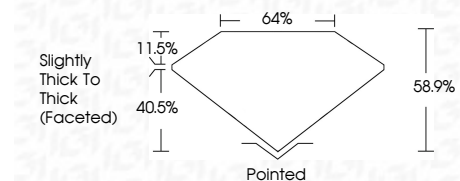
Red symbols indicate internal characteristics.
Green symbols indicate external characteristics.

COLOR

D E F G H I J Faint Very Light Light

CLARITY

FL IF VVS 1-2 VS 1-2 SI 1-2 I 1-3
Flawless Internally Flawless Very Very Slightly Included Very Slightly Included Slightly Included Included



ADDITIONAL GRADING INFORMATION

Polish EXCELLENT
Symmetry EXCELLENT
Fluorescence NONE
Inscription(s) IGI LG805631101
Comments: This Laboratory Grown Diamond was created by Chemical Vapor Deposition (CVD) growth process.



June 2, 2026
IGI Report No. LG805631101
SQUARE CUSHION MODIFIED BRILLIANT
1.51 CARAT
6.57 X 6.57 X 3.87 MM
FANCY INTENSE YELLOW
VVS 2
58.9%
40.5%
11.5%
Pointed
EXCELLENT
EXCELLENT
NONE
IGI LG805631101
Comments: This Laboratory Grown Diamond was created by Chemical Vapor Deposition (CVD) growth process.