



**ELECTRONIC COPY**

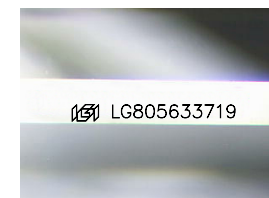
LG805633719  
Report verification at igi.org



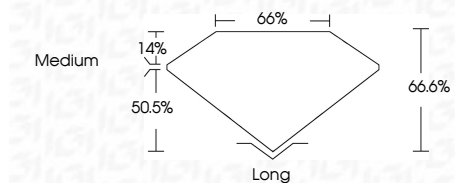
May 29, 2026  
IGI Report Number **LG805633719**  
Description **LABORATORY GROWN DIAMOND**  
Shape and Cutting Style **EMERALD CUT**  
Measurements **10.64 X 7.10 X 4.73 MM**

**GRADING RESULTS**

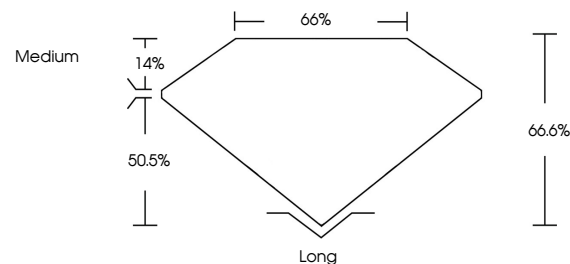
Carat Weight **3.58 CARATS**  
Color Grade **E**  
Clarity Grade **VS 1**



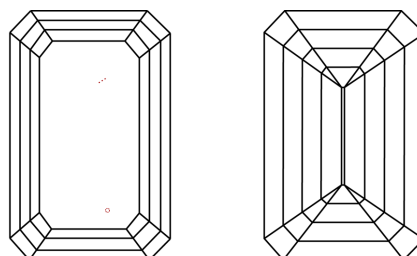
Sample Image Used



**PROPORTIONS**



**CLARITY CHARACTERISTICS**



**KEY TO SYMBOLS**

Red symbols indicate internal characteristics.  
Green symbols indicate external characteristics.

**COLOR**

D E F G H I J Faint Very Light Light

**CLARITY**

FL	IF	VS <sup>1-2</sup>	VS <sup>1-2</sup>	SI <sup>1-2</sup>	I <sup>1-3</sup>
Flawless	Internally Flawless	Very Very Slightly Included	Very Slightly Included	Slightly Included	Included

**ADDITIONAL GRADING INFORMATION**

Polish **EXCELLENT**  
Symmetry **EXCELLENT**  
Fluorescence **NONE**  
Inscription(s) **IGI LG805633719**  
Comments: This Laboratory Grown Diamond was created by Chemical Vapor Deposition (CVD) growth process.  
Type IIa



**IGI**



May 29, 2026  
IGI Report No. LG805633719  
EMERALD CUT  
10.64 X 7.10 X 4.73 MM  
3.58 CARATS  
E  
VS 1  
66.6%  
50.5%  
Medium  
Long  
EXCELLENT  
EXCELLENT  
NONE  
IGI LG805633719  
Comments: This Laboratory Grown Diamond was created by Chemical Vapor Deposition (CVD) growth process.  
Type IIa