



ELECTRONIC COPY

LG805636167
Report verification at igi.org



June 3, 2026

IGI Report Number **LG805636167**

Description **LABORATORY GROWN DIAMOND**

Shape and Cutting Style **CUSHION BRILLIANT**

Measurements **13.65 X 9.92 X 6.63 MM**

GRADING RESULTS

Carat Weight **6.38 CARATS**

Color Grade **LIGHT PINKISH BROWN**

Clarity Grade **VS 2**

June 3, 2026

IGI Report Number **LG805636167**

Description **LABORATORY GROWN DIAMOND**

Shape and Cutting Style **CUSHION BRILLIANT**

Measurements **13.65 X 9.92 X 6.63 MM**

GRADING RESULTS

Carat Weight **6.38 CARATS**

Color Grade **LIGHT PINKISH BROWN**

Clarity Grade **VS 2**

ADDITIONAL GRADING INFORMATION

Polish **EXCELLENT**

Symmetry **EXCELLENT**

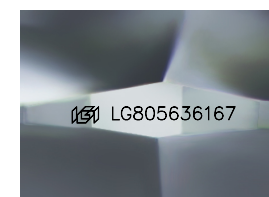
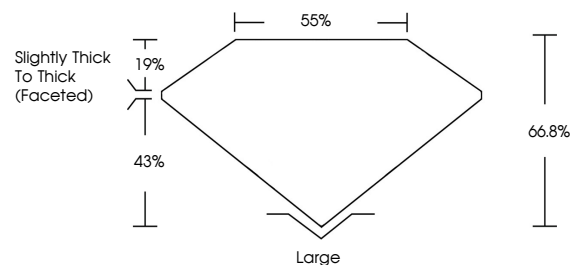
Fluorescence **VERY SLIGHT**

Inscription(s) **IGI LG805636167**

Comments: This Laboratory Grown Diamond was created by Chemical Vapor Deposition (CVD) growth process.

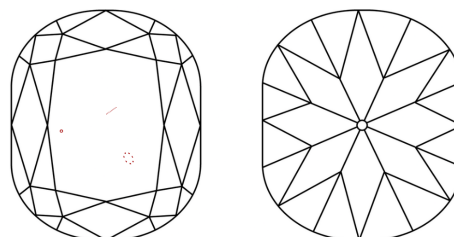
Indications of post-growth treatment.

PROPORTIONS



Sample Image Used

CLARITY CHARACTERISTICS



KEY TO SYMBOLS

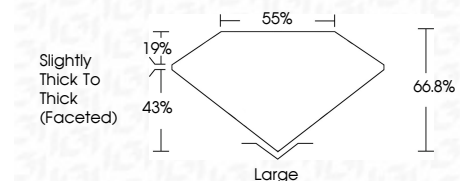
Red symbols indicate internal characteristics.
Green symbols indicate external characteristics.

COLOR

D E F G H I J Faint Very Light Light

CLARITY

FL	IF	VS ¹⁻²	VS ¹⁻²	SI ¹⁻²	I ¹⁻³
Flawless	Internally Flawless	Very Very Slightly Included	Very Slightly Included	Slightly Included	Included



ADDITIONAL GRADING INFORMATION

Polish **EXCELLENT**

Symmetry **EXCELLENT**

Fluorescence **VERY SLIGHT**

Inscription(s) **IGI LG805636167**

Comments: This Laboratory Grown Diamond was created by Chemical Vapor Deposition (CVD) growth process. Indications of post-growth treatment.



June 3, 2026
IGI Report No LG805636167
CUSHION BRILLIANT

6.38 CARATS
Carat Weight
LIGHT PINKISH BROWN
Color Grade

VS 2
Depth 66.8%
Table 55%
Girdle Slightly Thick To Thick (Faceted)

Large
Culet
Polish EXCELLENT
Symmetry EXCELLENT
Fluorescence VERY SLIGHT
Inscription(s) IGI LG805636167

Comments: This Laboratory Grown Diamond was created by Chemical Vapor Deposition (CVD) growth process. Indications of post-growth treatment.