



ELECTRONIC COPY

LG805636297
Report verification at igi.org



June 5, 2026
IGI Report Number **LG805636297**
Description **LABORATORY GROWN DIAMOND**
Shape and Cutting Style **CUSHION BRILLIANT**
Measurements **8.94 X 6.76 X 4.41 MM**
GRADING RESULTS
Carat Weight **2.21 CARATS**
Color Grade **VERY LIGHT YELLOWISH BROWN**
Clarity Grade **VS 1**

June 5, 2026
IGI Report Number **LG805636297**
Description **LABORATORY GROWN DIAMOND**
Shape and Cutting Style **CUSHION BRILLIANT**
Measurements **8.94 X 6.76 X 4.41 MM**

GRADING RESULTS

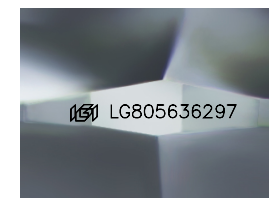
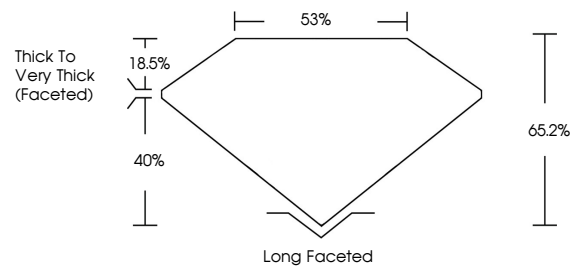
Carat Weight **2.21 CARATS**
Color Grade **VERY LIGHT YELLOWISH BROWN**
Clarity Grade **VS 1**

ADDITIONAL GRADING INFORMATION

Polish **EXCELLENT**
Symmetry **EXCELLENT**
Fluorescence **NONE**
Inscription(s) **IGI LG805636297**

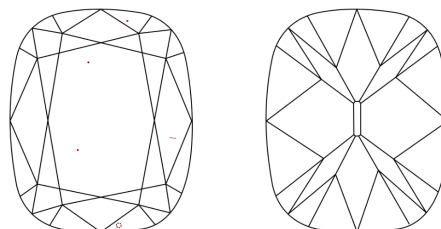
Comments: This Laboratory Grown Diamond was created by Chemical Vapor Deposition (CVD) growth process.
Indications of post-growth treatment.

PROPORTIONS



Sample Image Used

CLARITY CHARACTERISTICS



KEY TO SYMBOLS

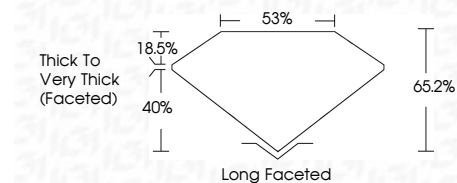
Red symbols indicate internal characteristics.
Green symbols indicate external characteristics.

COLOR

D E F G H I J Faint Very Light Light

CLARITY

FL	IF	VS ¹⁻²	VS ¹⁻²	SI ¹⁻²	I ¹⁻³
Flawless	Internally Flawless	Very Very Slightly Included	Very Slightly Included	Slightly Included	Included



ADDITIONAL GRADING INFORMATION

Polish **EXCELLENT**
Symmetry **EXCELLENT**
Fluorescence **NONE**
Inscription(s) **IGI LG805636297**
Comments: This Laboratory Grown Diamond was created by Chemical Vapor Deposition (CVD) growth process.
Indications of post-growth treatment.



June 5, 2026
IGI Report No. **LG805636297**
CUSHION BRILLIANT
2.21 CARATS
Carat Weight **2.21 CARATS**
Color Grade **VERY LIGHT YELLOWISH BROWN**
Clarity Grade **VS 1**
Depth **65.2%**
Table **53%**
Girdle **Thick to Very Thick (Faceted)**
Culet **Long Faceted**
Polish **EXCELLENT**
Symmetry **EXCELLENT**
Fluorescence **NONE**
Inscription(s) **IGI LG805636297**
Comments: This Laboratory Grown Diamond was created by Chemical Vapor Deposition (CVD) growth process.
Indications of post-growth treatment.