



**INTERNATIONAL  
GEMOLOGICAL  
INSTITUTE**

**ELECTRONIC COPY**



May 28, 2026

**IGI Report Number LG805640579**  
**CUT CORNERED RECTANGULAR  
MODIFIED BRILLIANT**  
**LABORATORY GROWN DIAMOND**  
**5.23 X 3.76 X 2.35 MM**

|                |                        |
|----------------|------------------------|
| Carat Weight   | <b>0.38 CARAT</b>      |
| Color Grade    | <b>D</b>               |
| Clarity Grade  | <b>VS 1</b>            |
| Polish         | <b>VERY GOOD</b>       |
| Symmetry       | <b>VERY GOOD</b>       |
| Fluorescence   | <b>NONE</b>            |
| Inscription(s) | <b>IGI LG805640579</b> |

Comments: This Laboratory Grown Diamond was created by Chemical Vapor Deposition (CVD) growth process. Type IIa

**LABORATORY GROWN DIAMOND REPORT**

May 28, 2026

IGI Report Number

**LG805640579**

Description

**LABORATORY GROWN DIAMOND**

Shape and Cutting Style

**CUT CORNERED RECTANGULAR MODIFIED  
BRILLIANT**

Measurements

**5.23 X 3.76 X 2.35 MM**

**GRADING RESULTS**

Carat Weight

**0.38 CARAT**

Color Grade

**D**

Clarity Grade

**VS 1**

**ADDITIONAL GRADING INFORMATION**

Polish

**VERY GOOD**

Symmetry

**VERY GOOD**

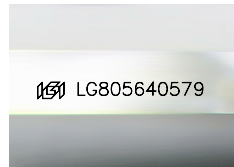
Fluorescence

**NONE**

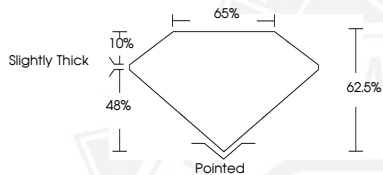
Inscription(s)

**IGI LG805640579**

Comments: This Laboratory Grown Diamond was created by Chemical Vapor Deposition (CVD) growth process.  
Type IIa



Sample Image Used



May 28, 2026

**IGI Report Number LG805640579**  
**CUT CORNERED RECTANGULAR  
MODIFIED BRILLIANT**  
**LABORATORY GROWN DIAMOND**  
**5.23 X 3.76 X 2.35 MM**

|                |                        |
|----------------|------------------------|
| Carat Weight   | <b>0.38 CARAT</b>      |
| Color Grade    | <b>D</b>               |
| Clarity Grade  | <b>VS 1</b>            |
| Polish         | <b>VERY GOOD</b>       |
| Symmetry       | <b>VERY GOOD</b>       |
| Fluorescence   | <b>NONE</b>            |
| Inscription(s) | <b>IGI LG805640579</b> |

Comments: This Laboratory Grown Diamond was created by Chemical Vapor Deposition (CVD) growth process. Type IIa



THIS DOCUMENT WAS PRODUCED WITH THE FOLLOWING SECURITY MEASURES: SPECIAL DOCUMENT PAPER, INK SCREENS, WATERMARK, BACKGROUND DESIGNS, HOLOGRAM AND OTHER SECURITY FEATURES NOT LISTED AND DO EXCEED DOCUMENT SECURITY INDUSTRY GUIDELINES.

For terms & conditions and to verify this report, please visit [www.igi.org](http://www.igi.org)