



ELECTRONIC COPY

LG805642025 Report verification at igi.org



June 2, 2026 IGI Report Number LG805642025 Description LABORATORY GROWN DIAMOND Shape and Cutting Style CUT CORNERED RECTANGULAR MODIFIED BRILLIANT Measurements 11.91 X 8.44 X 5.71 MM GRADING RESULTS Carat Weight 5.01 CARATS Color Grade E Clarity Grade VS 1

LABORATORY GROWN DIAMOND REPORT

June 2, 2026 IGI Report Number LG805642025 Description LABORATORY GROWN DIAMOND Shape and Cutting Style CUT CORNERED RECTANGULAR MODIFIED BRILLIANT Measurements 11.91 X 8.44 X 5.71 MM

GRADING RESULTS

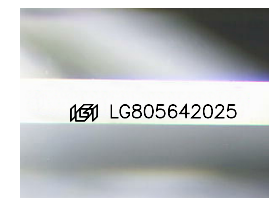
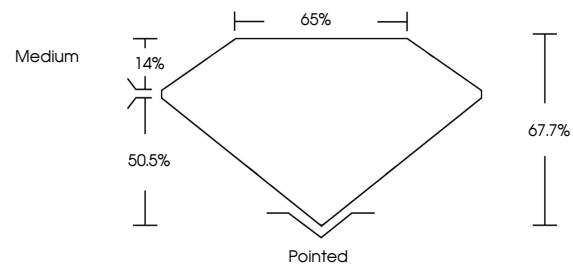
Carat Weight 5.01 CARATS Color Grade E Clarity Grade VS 1

ADDITIONAL GRADING INFORMATION

Polish EXCELLENT Symmetry EXCELLENT Fluorescence NONE Inscription(s) LG805642025

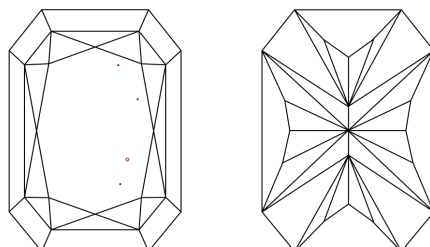
Comments: This Laboratory Grown Diamond was created by Chemical Vapor Deposition (CVD) growth process. Type IIa

PROPORTIONS



Sample Image Used

CLARITY CHARACTERISTICS



KEY TO SYMBOLS

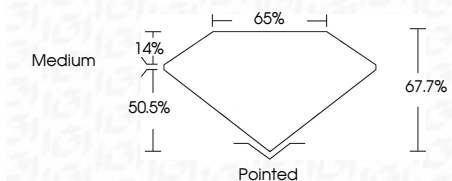
Red symbols indicate internal characteristics. Green symbols indicate external characteristics.

COLOR

D E F G H I J Faint Very Light Light

CLARITY

FL IF VS 1-2 VS 2-3 SI 1-2 I 1-3 Flawless Internally Flawless Very Very Slightly Included Very Slightly Included Slightly Included Included



ADDITIONAL GRADING INFORMATION

Polish EXCELLENT Symmetry EXCELLENT Fluorescence NONE Inscription(s) LG805642025 Comments: This Laboratory Grown Diamond was created by Chemical Vapor Deposition (CVD) growth process. Type IIa



IGI



June 2, 2026 IGI Report No LG805642025 CUT CORNERED RECT. MODIFIED BRILLIANT 11.91 X 8.44 X 5.71 MM 5.01 CARATS E VS 1 67.7% 65% Medium Pointed EXCELLENT EXCELLENT NONE LG805642025 Comments: This Laboratory Grown Diamond was created by Chemical Vapor Deposition (CVD) growth process. Type IIa