



ELECTRONIC COPY

LG805642132 Report verification at igi.org



June 1, 2026 IGI Report Number LG805642132 Description LABORATORY GROWN DIAMOND Shape and Cutting Style ROUND BRILLIANT Measurements 6.44 - 6.49 X 4.07 MM GRADING RESULTS Carat Weight 1.05 CARAT Color Grade F Clarity Grade VS 1 Cut Grade EXCELLENT

June 1, 2026 IGI Report Number LG805642132 Description LABORATORY GROWN DIAMOND Shape and Cutting Style ROUND BRILLIANT Measurements 6.44 - 6.49 X 4.07 MM

GRADING RESULTS

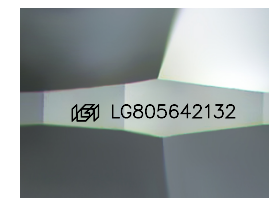
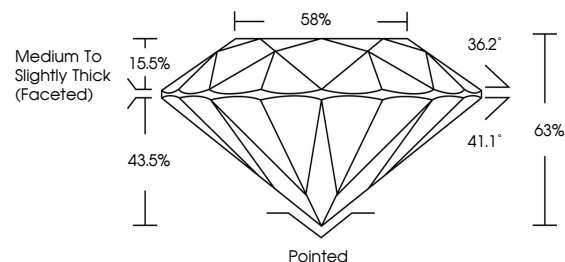
Carat Weight 1.05 CARAT Color Grade F Clarity Grade VS 1 Cut Grade EXCELLENT

ADDITIONAL GRADING INFORMATION

Polish EXCELLENT Symmetry EXCELLENT Fluorescence NONE Inscription(s) IGI LG805642132

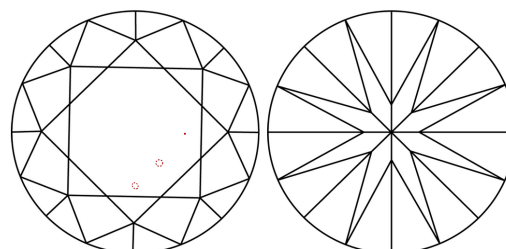
Comments: This Laboratory Grown Diamond was created by Chemical Vapor Deposition (CVD) growth process. Type IIa

PROPORTIONS



Sample Image Used

CLARITY CHARACTERISTICS



KEY TO SYMBOLS

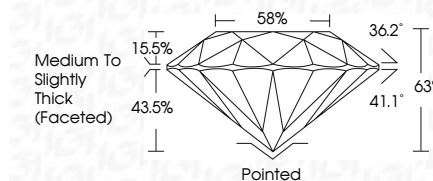
Red symbols indicate internal characteristics. Green symbols indicate external characteristics.

COLOR

D E F G H I J Faint Very Light Light

CLARITY

FL IF VS 1-2 VS 2-3 SI 1-2 I 1-3 Flawless Internally Flawless Very Very Slightly Included Very Slightly Included Slightly Included Included



ADDITIONAL GRADING INFORMATION

Polish EXCELLENT Symmetry EXCELLENT Fluorescence NONE Inscription(s) IGI LG805642132 Comments: This Laboratory Grown Diamond was created by Chemical Vapor Deposition (CVD) growth process. Type IIa



June 1, 2026 IGI Report No LG805642132 ROUND BRILLIANT 6.44 - 6.49 X 4.07 MM 1.05 CARAT F VS 1 EXCELLENT 65% 65% Medium To Slightly Thick (Faceted) Pointed EXCELLENT EXCELLENT NONE NONE IGI LG805642132 Comments: This Laboratory Grown Diamond was created by Chemical Vapor Deposition (CVD) growth process. Type IIa