



**INTERNATIONAL  
GEMOLOGICAL  
INSTITUTE**

**ELECTRONIC COPY**



June 3, 2026

IGI Report Number LG805642272

ROUND BRILLIANT

LABORATORY GROWN DIAMOND

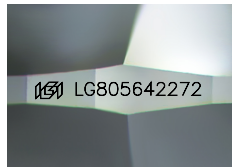
6.42 - 6.46 X 3.87 MM

Carat Weight	0.98 CARAT
Color Grade	F
Clarity Grade	VS 1
Cut Grade	IDEAL
Polish	EXCELLENT
Symmetry	EXCELLENT
Fluorescence	NONE
Inscription(s)	IGI LG805642272

Comments: This Laboratory Grown Diamond was created by Chemical Vapor Deposition (CVD) growth process. Type IIa

**LABORATORY GROWN DIAMOND REPORT**

June 3, 2026	
IGI Report Number	LG805642272
Description	LABORATORY GROWN DIAMOND
Shape and Cutting Style	ROUND BRILLIANT
Measurements	6.42 - 6.46 X 3.87 MM



Sample Image Used

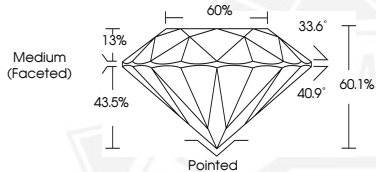
**GRADING RESULTS**

Carat Weight	0.98 CARAT
Color Grade	F
Clarity Grade	VS 1
Cut Grade	IDEAL

**ADDITIONAL GRADING INFORMATION**

Polish	EXCELLENT
Symmetry	EXCELLENT
Fluorescence	NONE
Inscription(s)	IGI LG805642272

Comments: This Laboratory Grown Diamond was created by Chemical Vapor Deposition (CVD) growth process. Type IIa



June 3, 2026

IGI Report Number LG805642272

ROUND BRILLIANT

LABORATORY GROWN DIAMOND

6.42 - 6.46 X 3.87 MM

Carat Weight	0.98 CARAT
Color Grade	F
Clarity Grade	VS 1
Cut Grade	IDEAL
Polish	EXCELLENT
Symmetry	EXCELLENT
Fluorescence	NONE
Inscription(s)	IGI LG805642272

Comments: This Laboratory Grown Diamond was created by Chemical Vapor Deposition (CVD) growth process. Type IIa



THIS DOCUMENT WAS PRODUCED WITH THE FOLLOWING SECURITY MEASURES: SPECIAL DOCUMENT PAPER, INK SCREENS, WATERMARK, BACKGROUND DESIGNS, HOLOGRAM AND OTHER SECURITY FEATURES NOT LISTED AND DO EXCEED DOCUMENT SECURITY INDUSTRY GUIDELINES.

For terms & conditions and to verify this report, please visit [www.igi.org](http://www.igi.org)