



**INTERNATIONAL
GEMOLOGICAL
INSTITUTE**

ELECTRONIC COPY



June 3, 2026

IGI Report Number **LG805642289**

**ROUND BRILLIANT
LABORATORY GROWN DIAMOND**
6.41 - 6.45 X 3.87 MM

Carat Weight	0.97 CARAT
Color Grade	E
Clarity Grade	VS 2
Cut Grade	IDEAL
Polish	EXCELLENT
Symmetry	EXCELLENT
Fluorescence	NONE
Inscription(s)	IGI LG805642289

Comments: This Laboratory Grown Diamond was created by Chemical Vapor Deposition (CVD) growth process. Type IIa

LABORATORY GROWN DIAMOND REPORT

June 3, 2026
IGI Report Number **LG805642289**
Description **LABORATORY GROWN DIAMOND**
Shape and Cutting Style **ROUND BRILLIANT**
Measurements **6.41 - 6.45 X 3.87 MM**

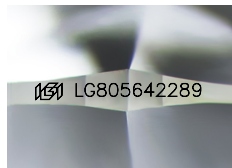
GRADING RESULTS

Carat Weight **0.97 CARAT**
Color Grade **E**
Clarity Grade **VS 2**
Cut Grade **IDEAL**

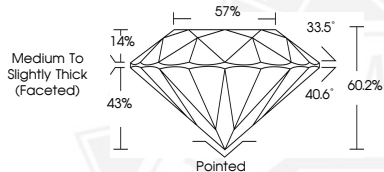
ADDITIONAL GRADING INFORMATION

Polish **EXCELLENT**
Symmetry **EXCELLENT**
Fluorescence **NONE**
Inscription(s) **IGI LG805642289**

Comments: This Laboratory Grown Diamond was created by Chemical Vapor Deposition (CVD) growth process. Type IIa



Sample Image Used



June 3, 2026

IGI Report Number **LG805642289**

**ROUND BRILLIANT
LABORATORY GROWN DIAMOND**
6.41 - 6.45 X 3.87 MM

Carat Weight	0.97 CARAT
Color Grade	E
Clarity Grade	VS 2
Cut Grade	IDEAL
Polish	EXCELLENT
Symmetry	EXCELLENT
Fluorescence	NONE
Inscription(s)	IGI LG805642289

Comments: This Laboratory Grown Diamond was created by Chemical Vapor Deposition (CVD) growth process. Type IIa



THIS DOCUMENT WAS PRODUCED WITH THE FOLLOWING SECURITY MEASURES: SPECIAL DOCUMENT PAPER, INK SCREENS, WATERMARK, BACKGROUND DESIGNS, HOLOGRAM AND OTHER SECURITY FEATURES NOT LISTED AND DO EXCEED DOCUMENT SECURITY INDUSTRY GUIDELINES.

For terms & conditions and to verify this report, please visit www.igi.org