



May 30, 2026

IGI Report Number **LG805645488**

**ROUND BRILLIANT
LABORATORY GROWN DIAMOND
5.19 - 5.21 X 3.14 MM**

Carat Weight **0.52 CARAT**
Color Grade **D**
Clarity Grade **VVS 2**
Cut Grade **EXCELLENT**
Polish **VERY GOOD**
Symmetry **VERY GOOD**
Fluorescence **NONE**
Inscription(s) **IGI LG805645488**

Comments: As Grown - No indication of post-growth treatment. This Laboratory Grown Diamond was created by High Pressure High Temperature (HPHT) growth process. Type II

LABORATORY GROWN DIAMOND REPORT

May 30, 2026
IGI Report Number **LG805645488**
Description **LABORATORY GROWN DIAMOND**
Shape and Cutting Style **ROUND BRILLIANT**
Measurements **5.19 - 5.21 X 3.14 MM**

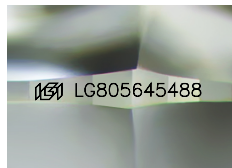
GRADING RESULTS

Carat Weight **0.52 CARAT**
Color Grade **D**
Clarity Grade **VVS 2**
Cut Grade **EXCELLENT**

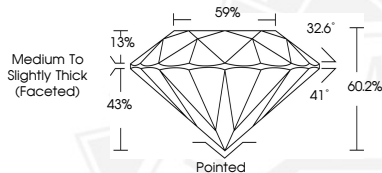
ADDITIONAL GRADING INFORMATION

Polish **VERY GOOD**
Symmetry **VERY GOOD**
Fluorescence **NONE**
Inscription(s) **IGI LG805645488**

Comments: As Grown - No indication of post-growth treatment. This Laboratory Grown Diamond was created by High Pressure High Temperature (HPHT) growth process. Type II



Sample Image Used



May 30, 2026

IGI Report Number **LG805645488**

**ROUND BRILLIANT
LABORATORY GROWN DIAMOND
5.19 - 5.21 X 3.14 MM**

Carat Weight **0.52 CARAT**
Color Grade **D**
Clarity Grade **VVS 2**
Cut Grade **EXCELLENT**
Polish **VERY GOOD**
Symmetry **VERY GOOD**
Fluorescence **NONE**
Inscription(s) **IGI LG805645488**

Comments: As Grown - No indication of post-growth treatment. This Laboratory Grown Diamond was created by High Pressure High Temperature (HPHT) growth process. Type II



THIS DOCUMENT WAS PRODUCED WITH THE FOLLOWING SECURITY MEASURES: SPECIAL DOCUMENT PAPER, INK SCREENS, WATERMARK, BACKGROUND DESIGNS, HOLOGRAM AND OTHER SECURITY FEATURES NOT LISTED AND DO EXCEED DOCUMENT SECURITY INDUSTRY GUIDELINES.