



ELECTRONIC COPY

LG805646586
Report verification at igi.org



June 3, 2026

IGI Report Number **LG805646586**

Description **LABORATORY GROWN DIAMOND**

Shape and Cutting Style **ROUND BRILLIANT**

Measurements **6.53 - 6.56 X 3.98 MM**

GRADING RESULTS

Carat Weight **1.05 CARAT**

Color Grade **E**

Clarity Grade **VVS 2**

Cut Grade **IDEAL**

June 3, 2026

IGI Report Number **LG805646586**

Description **LABORATORY GROWN DIAMOND**

Shape and Cutting Style **ROUND BRILLIANT**

Measurements **6.53 - 6.56 X 3.98 MM**

GRADING RESULTS

Carat Weight **1.05 CARAT**

Color Grade **E**

Clarity Grade **VVS 2**

Cut Grade **IDEAL**

ADDITIONAL GRADING INFORMATION

Polish **EXCELLENT**

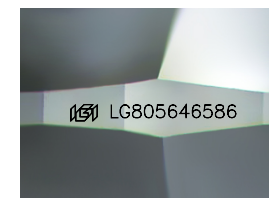
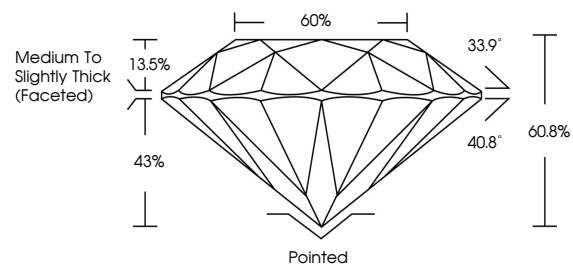
Symmetry **EXCELLENT**

Fluorescence **NONE**

Inscription(s) **LG805646586**

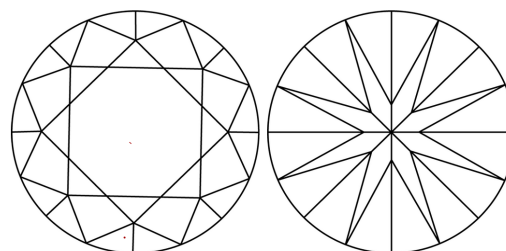
Comments: This Laboratory Grown Diamond was created by Chemical Vapor Deposition (CVD) growth process.
Type IIa

PROPORTIONS



Sample Image Used

CLARITY CHARACTERISTICS



KEY TO SYMBOLS

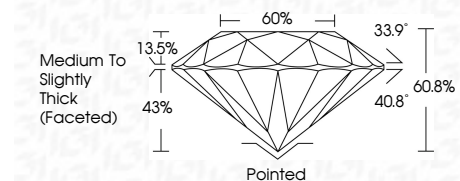
Red symbols indicate internal characteristics.
Green symbols indicate external characteristics.

COLOR

D E F G H I J Faint Very Light Light

CLARITY

| FL | IF | VVS ¹⁻² | VS ¹⁻² | SI ¹⁻² | I ¹⁻³ |
|----------|---------------------|-----------------------------|------------------------|-------------------|------------------|
| Flawless | Internally Flawless | Very Very Slightly Included | Very Slightly Included | Slightly Included | Included |



ADDITIONAL GRADING INFORMATION

Polish **EXCELLENT**

Symmetry **EXCELLENT**

Fluorescence **NONE**

Inscription(s) **LG805646586**

Comments: This Laboratory Grown Diamond was created by Chemical Vapor Deposition (CVD) growth process.
Type IIa



IGI



| | | | |
|------------------------------------|------------------------------------|------------------------------------|--|
| June 3, 2026 | IGI Report No. LG805646586 | 1.05 CARAT | E |
| ROUND BRILLIANT | 6.53 - 6.56 X 3.98 MM | VVS 2 | IDEAL |
| Carat Weight | Color Grade | Clarity Grade | Depth |
| 1.05 CARAT | E | VVS 2 | 60.8% |
| Color Grade | Clarity Grade | Cut Grade | Table |
| E | VVS 2 | IDEAL | 60% |
| Clarity Grade | Cut Grade | Grade | Medium To Slightly Thick (Faceted) |
| VVS 2 | IDEAL | 60% | Pointed |
| Cut Grade | Table | Grade | EXCELLENT |
| IDEAL | 60% | Medium To Slightly Thick (Faceted) | EXCELLENT |
| Table | Grade | Culet | NONE |
| 60% | Medium To Slightly Thick (Faceted) | Polish | EXCELLENT |
| Medium To Slightly Thick (Faceted) | Pointed | Symmetry | EXCELLENT |
| EXCELLENT | EXCELLENT | Fluorescence | NONE |
| EXCELLENT | NONE | Inscription(s) | LG805646586 |
| NONE | LG805646586 | Comments: | This Laboratory Grown Diamond was created by Chemical Vapor Deposition (CVD) growth process. Type IIa |