



ELECTRONIC COPY

LG805647927
Report verification at igi.org



June 4, 2026

IGI Report Number LG805647927

Description LABORATORY GROWN DIAMOND

Shape and Cutting Style CUT CORNERED RECTANGULAR MODIFIED BRILLIANT

Measurements 7.16 X 4.93 X 3.38 MM

GRADING RESULTS

Carat Weight 1.02 CARAT

Color Grade G

Clarity Grade VVS 2

ADDITIONAL GRADING INFORMATION

Carat Weight 1.02 CARAT

Color Grade G

Clarity Grade VVS 2

Polish EXCELLENT

Symmetry EXCELLENT

Fluorescence NONE

Inscription(s) LG805647927

Comments: This Laboratory Grown Diamond was created by Chemical Vapor Deposition (CVD) growth process.

Type IIa



Summary table with columns: June 4, 2026, IGI Report No. LG805647927, CUT CORNERED RECT. MODIFIED BRILLIANT, 7.16 X 4.93 X 3.38 MM, 1.02 CARAT, G, VVS 2, 68.6%, 64%, Medium, Pointed, EXCELLENT, EXCELLENT, NONE, LG805647927

Comments: This Laboratory Grown Diamond was created by Chemical Vapor Deposition (CVD) growth process. Type IIa

LABORATORY GROWN DIAMOND REPORT

June 4, 2026

IGI Report Number LG805647927

Description LABORATORY GROWN DIAMOND

Shape and Cutting Style CUT CORNERED RECTANGULAR MODIFIED BRILLIANT

Measurements 7.16 X 4.93 X 3.38 MM

GRADING RESULTS

Carat Weight 1.02 CARAT

Color Grade G

Clarity Grade VVS 2

ADDITIONAL GRADING INFORMATION

Polish EXCELLENT

Symmetry EXCELLENT

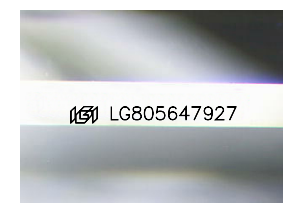
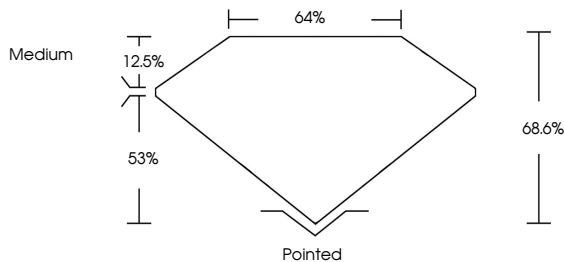
Fluorescence NONE

Inscription(s) LG805647927

Comments: This Laboratory Grown Diamond was created by Chemical Vapor Deposition (CVD) growth process.

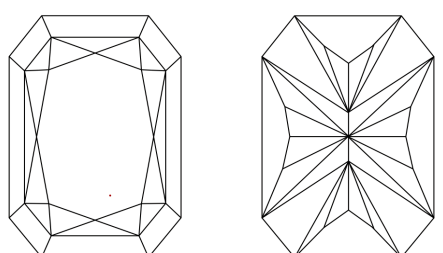
Type IIa

PROPORTIONS



Sample Image Used

CLARITY CHARACTERISTICS



KEY TO SYMBOLS

Red symbols indicate internal characteristics. Green symbols indicate external characteristics.

COLOR

Color scale table with categories: D, E, F, G, H, I, J, Faint, Very Light, Light

CLARITY

Clarity scale table with categories: FL, IF, VVS 1-2, VS 1-2, SI 1-2, I 1-3, Flawless, Internally Flawless, Very Very Slightly Included, Very Slightly Included, Slightly Included, Included

