



**ELECTRONIC COPY**

LG805648400  
Report verification at igi.org



June 4, 2026

IGI Report Number **LG805648400**

Description **LABORATORY GROWN DIAMOND**

Shape and Cutting Style **ROUND BRILLIANT**

Measurements **6.65 - 6.68 X 3.96 MM**

**GRADING RESULTS**

Carat Weight **1.08 CARAT**

Color Grade **F**

Clarity Grade **SI 1**

Cut Grade **IDEAL**

June 4, 2026

IGI Report Number **LG805648400**

Description **LABORATORY GROWN DIAMOND**

Shape and Cutting Style **ROUND BRILLIANT**

Measurements **6.65 - 6.68 X 3.96 MM**

**GRADING RESULTS**

Carat Weight **1.08 CARAT**

Color Grade **F**

Clarity Grade **SI 1**

Cut Grade **IDEAL**

**ADDITIONAL GRADING INFORMATION**

Polish **EXCELLENT**

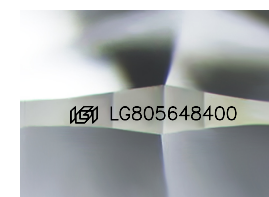
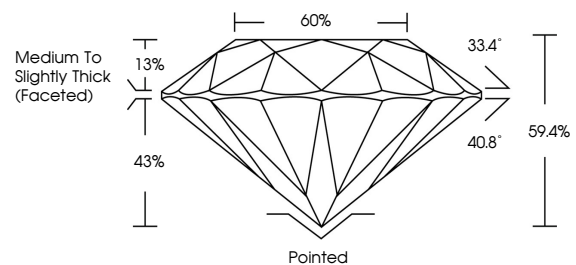
Symmetry **EXCELLENT**

Fluorescence **NONE**

Inscription(s) **IGI LG805648400**

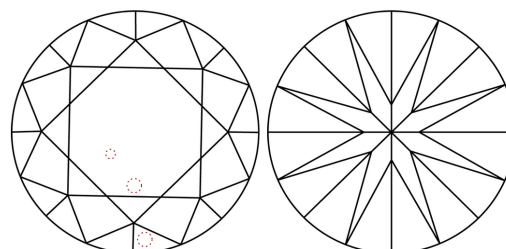
Comments: This Laboratory Grown Diamond was created by Chemical Vapor Deposition (CVD) growth process.  
Type IIa

**PROPORTIONS**



Sample Image Used

**CLARITY CHARACTERISTICS**



**KEY TO SYMBOLS**

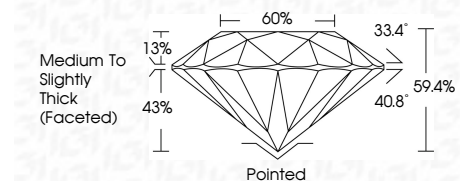
Red symbols indicate internal characteristics.  
Green symbols indicate external characteristics.

**COLOR**

D E F G H I J Faint Very Light Light

**CLARITY**

FL	IF	VS <sup>1-2</sup>	VS <sup>1-2</sup>	SI <sup>1-2</sup>	I <sup>1-3</sup>
Flawless	Internally Flawless	Very Very Slightly Included	Very Slightly Included	Slightly Included	Included



**ADDITIONAL GRADING INFORMATION**

Polish **EXCELLENT**

Symmetry **EXCELLENT**

Fluorescence **NONE**

Inscription(s) **IGI LG805648400**

Comments: This Laboratory Grown Diamond was created by Chemical Vapor Deposition (CVD) growth process.  
Type IIa



June 4, 2026  
IGI Report No. LG805648400  
ROUND BRILLIANT

6.65 - 6.68 X 3.96 MM  
1.08 CARAT  
F  
SI 1  
IDEAL  
59.4%  
60%  
Medium To Slightly Thick (Faceted)

Culet  
Polish  
Symmetry  
Fluorescence  
Inscription(s)

Pointed  
EXCELLENT  
EXCELLENT  
NONE  
IGI LG805648400

Comments: This Laboratory Grown Diamond was created by Chemical Vapor Deposition (CVD) growth process.  
Type IIa