



**ELECTRONIC COPY**

LG805648716  
Report verification at igi.org



June 4, 2026  
IGI Report Number **LG805648716**  
Description **LABORATORY GROWN DIAMOND**  
Shape and Cutting Style **CUSHION MODIFIED BRILLIANT**  
Measurements **11.79 X 8.61 X 5.81 MM**  
**GRADING RESULTS**  
Carat Weight **4.79 CARATS**  
Color Grade **E**  
Clarity Grade **VS 1**

June 4, 2026  
IGI Report Number **LG805648716**  
Description **LABORATORY GROWN DIAMOND**  
Shape and Cutting Style **CUSHION MODIFIED BRILLIANT**  
Measurements **11.79 X 8.61 X 5.81 MM**

**GRADING RESULTS**

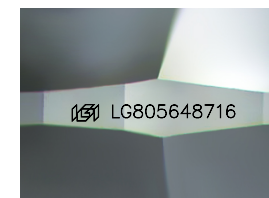
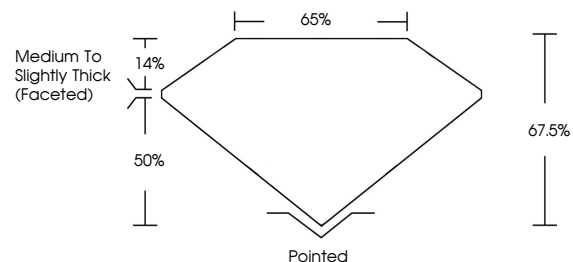
Carat Weight **4.79 CARATS**  
Color Grade **E**  
Clarity Grade **VS 1**

**ADDITIONAL GRADING INFORMATION**

Polish **EXCELLENT**  
Symmetry **EXCELLENT**  
Fluorescence **NONE**  
Inscription(s) **IGI LG805648716**

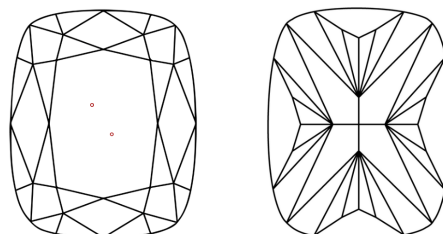
Comments: This Laboratory Grown Diamond was created by Chemical Vapor Deposition (CVD) growth process. Type IIa

**PROPORTIONS**



Sample Image Used

**CLARITY CHARACTERISTICS**



**KEY TO SYMBOLS**

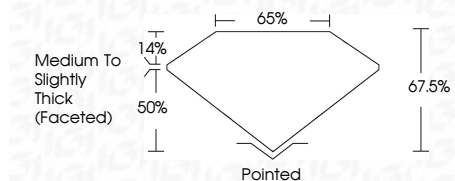
Red symbols indicate internal characteristics.  
Green symbols indicate external characteristics.

**COLOR**

D E F G H I J Faint Very Light Light

**CLARITY**

FL	IF	VS <sup>1-2</sup>	VS <sup>1-2</sup>	SI <sup>1-2</sup>	I <sup>1-3</sup>
Flawless	Internally Flawless	Very Very Slightly Included	Very Slightly Included	Slightly Included	Included



**ADDITIONAL GRADING INFORMATION**

Polish **EXCELLENT**  
Symmetry **EXCELLENT**  
Fluorescence **NONE**  
Inscription(s) **IGI LG805648716**  
Comments: This Laboratory Grown Diamond was created by Chemical Vapor Deposition (CVD) growth process. Type IIa



June 4, 2026  
IGI Report No. **LG805648716**  
**CUSHION MODIFIED BRILLIANT**  
**11.79 X 8.61 X 5.81 MM**  
**4.79 CARATS**  
**E**  
**VS 1**  
**67.5%**  
**65%**  
Medium to Slightly Thick (Faceted)  
Pointed  
**EXCELLENT**  
**EXCELLENT**  
**NONE**  
IGI LG805648716  
Comments: This Laboratory Grown Diamond was created by Chemical Vapor Deposition (CVD) growth process. Type IIa