



ELECTRONIC COPY

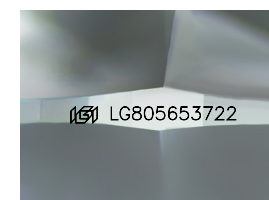
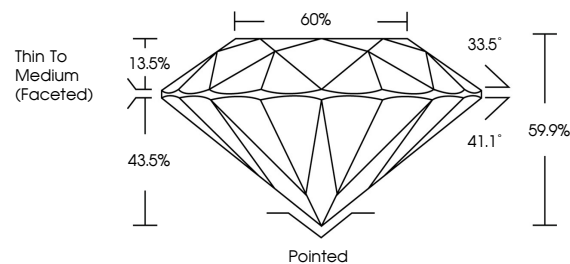
LG805653722 Report verification at igi.org



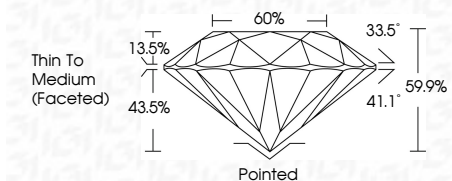
June 4, 2026 IGI Report Number LG805653722 Description LABORATORY GROWN DIAMOND Shape and Cutting Style ROUND BRILLIANT Measurements 6.58 - 6.61 X 3.95 MM GRADING RESULTS Carat Weight 1.04 CARAT Color Grade E Clarity Grade VVS 2 Cut Grade IDEAL

June 4, 2026 IGI Report Number LG805653722 Description LABORATORY GROWN DIAMOND Shape and Cutting Style ROUND BRILLIANT Measurements 6.58 - 6.61 X 3.95 MM

PROPORTIONS



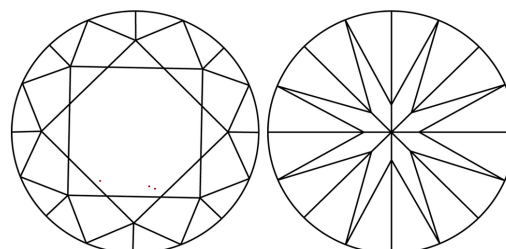
Sample Image Used



GRADING RESULTS

Carat Weight 1.04 CARAT Color Grade E Clarity Grade VVS 2 Cut Grade IDEAL

CLARITY CHARACTERISTICS



KEY TO SYMBOLS

Red symbols indicate internal characteristics. Green symbols indicate external characteristics.

ADDITIONAL GRADING INFORMATION

Polish EXCELLENT Symmetry EXCELLENT Fluorescence NONE Inscription(s) LG805653722

COLOR

D E F G H I J Faint Very Light Light

CLARITY

FL IF VVS 1-2 VS 1-2 SI 1-2 I 1-3 Flawless Internally Flawless Very Very Slightly Included Very Slightly Included Slightly Included Included

ADDITIONAL GRADING INFORMATION

Polish EXCELLENT Symmetry EXCELLENT Fluorescence NONE Inscription(s) LG805653722 Comments: This Laboratory Grown Diamond was created by Chemical Vapor Deposition (CVD) growth process. Type IIa



IGI



June 4, 2026 IGI Report No LG805653722 ROUND BRILLIANT 6.58 - 6.61 X 3.95 MM 1.04 CARAT E VVS 2 IDEAL 59.9% 60% Thin To Medium (Faceted) Pointed EXCELLENT EXCELLENT NONE NONE LG805653722 Comments: This Laboratory Grown Diamond was created by Chemical Vapor Deposition (CVD) growth process. Type IIa