



June 4, 2026

IGI Report Number **LG805657488**

OVAL BRILLIANT

LABORATORY GROWN DIAMOND

6.46 X 4.57 X 2.87 MM

Carat Weight **0.53 CARAT**

Color Grade **D**

Clarity Grade **VS 2**

Polish **EXCELLENT**

Symmetry **EXCELLENT**

Fluorescence **NONE**

Inscription(s) **IGI LG805657488**

Comments: As Grown - No indication of post-growth treatment. This Laboratory Grown Diamond was created by High Pressure High Temperature (HPHT) growth process. Type II

LABORATORY GROWN DIAMOND REPORT

June 4, 2026
IGI Report Number **LG805657488**
Description **LABORATORY GROWN DIAMOND**
Shape and Cutting Style **OVAL BRILLIANT**
Measurements **6.46 X 4.57 X 2.87 MM**

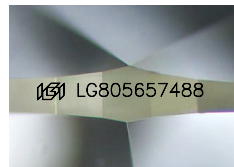
GRADING RESULTS

Carat Weight **0.53 CARAT**
Color Grade **D**
Clarity Grade **VS 2**

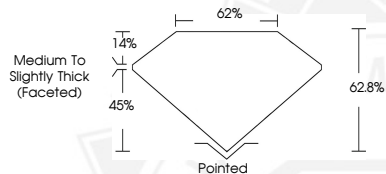
ADDITIONAL GRADING INFORMATION

Polish **EXCELLENT**
Symmetry **EXCELLENT**
Fluorescence **NONE**
Inscription(s) **IGI LG805657488**

Comments: As Grown - No indication of post-growth treatment. This Laboratory Grown Diamond was created by High Pressure High Temperature (HPHT) growth process. Type II



Sample Image Used



June 4, 2026

IGI Report Number **LG805657488**

OVAL BRILLIANT

LABORATORY GROWN DIAMOND

6.46 X 4.57 X 2.87 MM

Carat Weight **0.53 CARAT**

Color Grade **D**

Clarity Grade **VS 2**

Polish **EXCELLENT**

Symmetry **EXCELLENT**

Fluorescence **NONE**

Inscription(s) **IGI LG805657488**

Comments: As Grown - No indication of post-growth treatment. This Laboratory Grown Diamond was created by High Pressure High Temperature (HPHT) growth process. Type II



THIS DOCUMENT WAS PRODUCED WITH THE FOLLOWING SECURITY MEASURES: SPECIAL DOCUMENT PAPER, INK SCREENS, WATERMARK, BACKGROUND DESIGNS, HOLOGRAM AND OTHER SECURITY FEATURES NOT LISTED AND DO EXCEED DOCUMENT SECURITY INDUSTRY GUIDELINES.