



ELECTRONIC COPY

LG805663669 Report verification at igi.org



June 4, 2026 IGI Report Number LG805663669 Description LABORATORY GROWN DIAMOND Shape and Cutting Style CUT CORNERED RECTANGULAR MODIFIED BRILLIANT Measurements 10.26 X 7.09 X 4.81 MM GRADING RESULTS Carat Weight 3.08 CARATS Color Grade E Clarity Grade VS 1

June 4, 2026 IGI Report Number LG805663669 Description LABORATORY GROWN DIAMOND Shape and Cutting Style CUT CORNERED RECTANGULAR MODIFIED BRILLIANT Measurements 10.26 X 7.09 X 4.81 MM

GRADING RESULTS

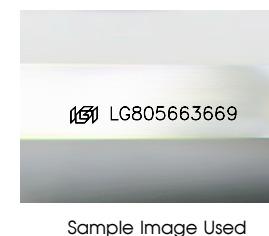
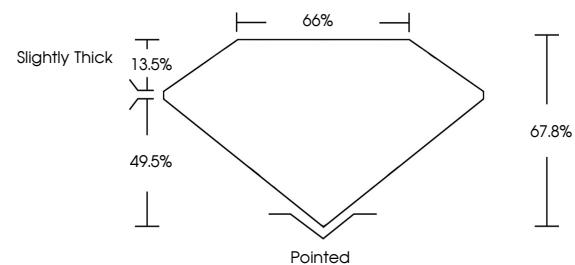
Carat Weight 3.08 CARATS Color Grade E Clarity Grade VS 1

ADDITIONAL GRADING INFORMATION

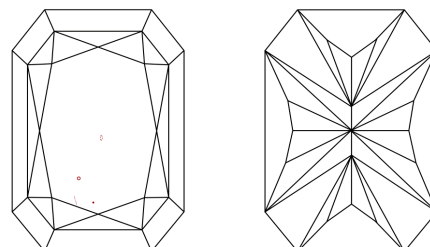
Polish EXCELLENT Symmetry EXCELLENT Fluorescence NONE Inscription(s) LG805663669

Comments: This Laboratory Grown Diamond was created by Chemical Vapor Deposition (CVD) growth process. Type IIa

PROPORTIONS



CLARITY CHARACTERISTICS



KEY TO SYMBOLS

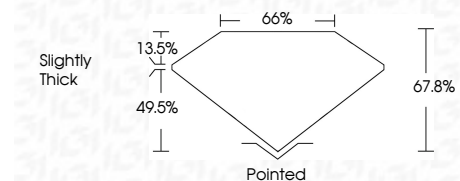
Red symbols indicate internal characteristics. Green symbols indicate external characteristics.

COLOR

D E F G H I J Faint Very Light Light

CLARITY

FL IF VS 1-2 VS 2-3 SI 1-2 I 1-3 Flawless Internally Flawless Very Very Slightly Included Very Slightly Included Slightly Included Included



ADDITIONAL GRADING INFORMATION

Polish EXCELLENT Symmetry EXCELLENT Fluorescence NONE Inscription(s) LG805663669 Comments: This Laboratory Grown Diamond was created by Chemical Vapor Deposition (CVD) growth process. Type IIa



June 4, 2026 IGI Report No. LG805663669 CUT CORNERED RECT. MODIFIED BRILLIANT 10.26 X 7.09 X 4.81 MM 3.08 CARATS E VS 1 67.8% 49.5% Slightly Thick Pointed EXCELLENT EXCELLENT NONE NONE LG805663669 Comments: This Laboratory Grown Diamond was created by Chemical Vapor Deposition (CVD) growth process. Type IIa