



INTERNATIONAL GEMOLOGICAL INSTITUTE

ELECTRONIC COPY



June 4, 2026

IGI Report Number LG805668149

ROUND BRILLIANT

LABORATORY GROWN DIAMOND

6.42 - 6.47 X 3.88 MM

Carat Weight	0.99 CARAT
Color Grade	E
Clarity Grade	VS 1
Cut Grade	IDEAL
Polish	EXCELLENT
Symmetry	EXCELLENT
Fluorescence	NONE
Inscription(s)	IGI LG805668149

Comments: This Laboratory Grown Diamond was created by Chemical Vapor Deposition (CVD) growth process. Type IIa

LABORATORY GROWN DIAMOND REPORT

June 4, 2026	
IGI Report Number	LG805668149
Description	LABORATORY GROWN DIAMOND
Shape and Cutting Style	ROUND BRILLIANT
Measurements	6.42 - 6.47 X 3.88 MM

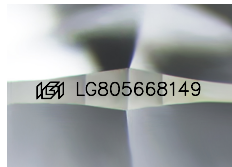
GRADING RESULTS

Carat Weight	0.99 CARAT
Color Grade	E
Clarity Grade	VS 1
Cut Grade	IDEAL

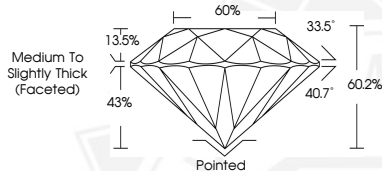
ADDITIONAL GRADING INFORMATION

Polish	EXCELLENT
Symmetry	EXCELLENT
Fluorescence	NONE
Inscription(s)	IGI LG805668149

Comments: This Laboratory Grown Diamond was created by Chemical Vapor Deposition (CVD) growth process. Type IIa



Sample Image Used



June 4, 2026

IGI Report Number LG805668149

ROUND BRILLIANT

LABORATORY GROWN DIAMOND

6.42 - 6.47 X 3.88 MM

Carat Weight	0.99 CARAT
Color Grade	E
Clarity Grade	VS 1
Cut Grade	IDEAL
Polish	EXCELLENT
Symmetry	EXCELLENT
Fluorescence	NONE
Inscription(s)	IGI LG805668149

Comments: This Laboratory Grown Diamond was created by Chemical Vapor Deposition (CVD) growth process. Type IIa



THIS DOCUMENT WAS PRODUCED WITH THE FOLLOWING SECURITY MEASURES: SPECIAL DOCUMENT PAPER, INK SCREENS, WATERMARK, BACKGROUND DESIGNS, HOLOGRAM AND OTHER SECURITY FEATURES NOT LISTED AND DO EXCEED DOCUMENT SECURITY INDUSTRY GUIDELINES.

For terms & conditions and to verify this report, please visit www.igi.org