



**ELECTRONIC COPY**

LG805668207  
Report verification at igi.org



May 28, 2026

IGI Report Number **LG805668207**

Description **LABORATORY GROWN DIAMOND**

Shape and Cutting Style **ROUND BRILLIANT**

Measurements **8.27 - 8.31 X 5.18 MM**

**GRADING RESULTS**

Carat Weight **2.19 CARATS**

Color Grade **D**

Clarity Grade **VVS 2**

Cut Grade **IDEAL**

May 28, 2026

IGI Report Number **LG805668207**

Description **LABORATORY GROWN DIAMOND**

Shape and Cutting Style **ROUND BRILLIANT**

Measurements **8.27 - 8.31 X 5.18 MM**

**GRADING RESULTS**

Carat Weight **2.19 CARATS**

Color Grade **D**

Clarity Grade **VVS 2**

Cut Grade **IDEAL**

**ADDITIONAL GRADING INFORMATION**

Polish **EXCELLENT**

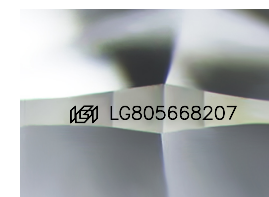
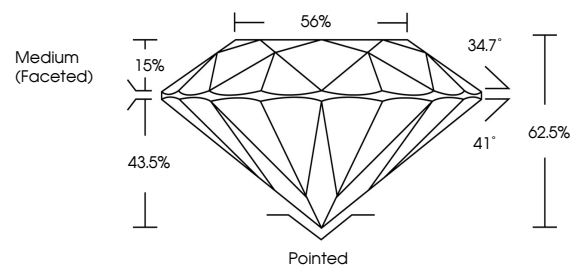
Symmetry **EXCELLENT**

Fluorescence **NONE**

Inscription(s) **IGI LG805668207**

Comments: This Laboratory Grown Diamond was created by Chemical Vapor Deposition (CVD) growth process. Type IIa

**PROPORTIONS**



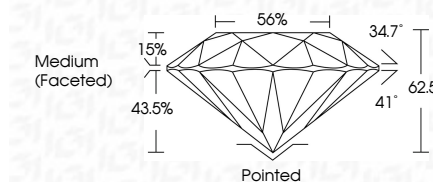
Sample Image Used

**COLOR**

D E F G H I J Faint Very Light Light

**CLARITY**

FL	IF	VS <sup>1-2</sup>	VS <sup>1-2</sup>	SI <sup>1-2</sup>	I <sup>1-3</sup>
Flawless	Internally Flawless	Very Very Slightly Included	Very Slightly Included	Slightly Included	Included



**ADDITIONAL GRADING INFORMATION**

Polish **EXCELLENT**

Symmetry **EXCELLENT**

Fluorescence **NONE**

Inscription(s) **IGI LG805668207**

Comments: This Laboratory Grown Diamond was created by Chemical Vapor Deposition (CVD) growth process. Type IIa



**IGI**



May 28, 2026	IGI Report No. LG805668207	2.19 CARATS	D
8.27 - 8.31 X 5.18 MM	ROUND BRILLIANT	2.19 CARATS	D
Carat Weight	Color Grade	Clarity Grade	Cut Grade
2.19 CARATS	D	VVS 2	IDEAL
Depth	Table	Girdle	Medium (Faceted)
62.5%	15%	43.5%	56%
Pointed	Polish	Symmetry	Fluorescence
EXCELLENT	EXCELLENT	NONE	None
Inscription(s)	IGI LG805668207		
Comments: This Laboratory Grown Diamond was created by Chemical Vapor Deposition (CVD) growth process. Type IIa			