



ELECTRONIC COPY

LABORATORY GROWN DIAMOND REPORT

June 3, 2026 IGI Report Number LG805670128 Description LABORATORY GROWN DIAMOND Shape and Cutting Style PRINCESS CUT Measurements 6.89 X 6.88 X 4.89 MM

GRADING RESULTS

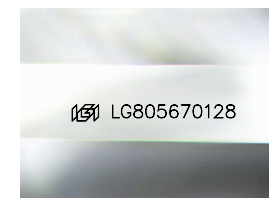
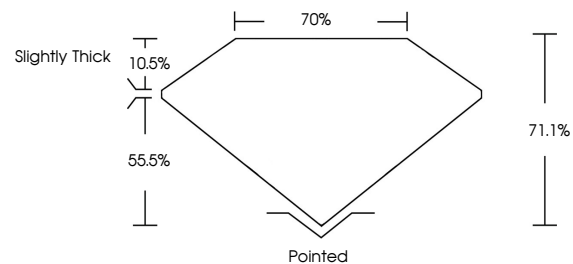
Carat Weight 2.07 CARATS Color Grade F Clarity Grade VS 1

ADDITIONAL GRADING INFORMATION

Polish EXCELLENT Symmetry EXCELLENT Fluorescence NONE Inscription(s) LG805670128

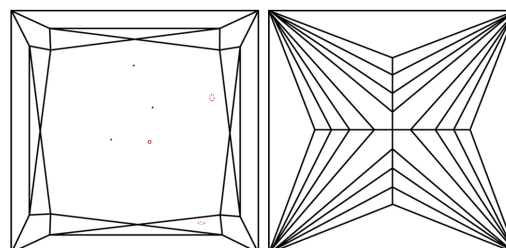
Comments: This Laboratory Grown Diamond was created by Chemical Vapor Deposition (CVD) growth process. Type IIa

PROPORTIONS



Sample Image Used

CLARITY CHARACTERISTICS



KEY TO SYMBOLS

Red symbols indicate internal characteristics. Green symbols indicate external characteristics.

COLOR

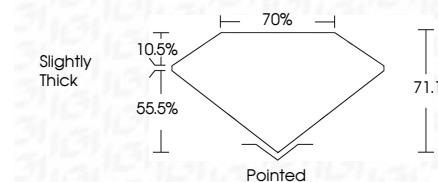
D E F G H I J Faint Very Light Light

CLARITY

FL IF VS 1-2 VS 2-3 SI 1-2 I 1-3 Flawless Internally Flawless Very Very Slightly Included Very Slightly Included Slightly Included Included



June 3, 2026 IGI Report Number LG805670128 Description LABORATORY GROWN DIAMOND Shape and Cutting Style PRINCESS CUT Measurements 6.89 X 6.88 X 4.89 MM GRADING RESULTS Carat Weight 2.07 CARATS Color Grade F Clarity Grade VS 1



ADDITIONAL GRADING INFORMATION

Polish EXCELLENT Symmetry EXCELLENT Fluorescence NONE Inscription(s) LG805670128 Comments: This Laboratory Grown Diamond was created by Chemical Vapor Deposition (CVD) growth process. Type IIa



June 3, 2026 IGI Report No LG805670128 PRINCESS CUT 6.89 X 6.88 X 4.89 MM 2.07 CARATS F VS 1 71.1% 70% Slightly Thick Pointed EXCELLENT EXCELLENT NONE NONE LG805670128 Comments: This Laboratory Grown Diamond was created by Chemical Vapor Deposition (CVD) growth process. Type IIa