



ELECTRONIC COPY

LG805670801 Report verification at igi.org



May 28, 2026 IGI Report Number LG805670801 Description LABORATORY GROWN DIAMOND Shape and Cutting Style ROUND BRILLIANT Measurements 6.51 - 6.55 X 3.84 MM GRADING RESULTS Carat Weight 1.00 CARAT Color Grade F Clarity Grade VVS 2 Cut Grade IDEAL

May 28, 2026 IGI Report Number LG805670801 Description LABORATORY GROWN DIAMOND Shape and Cutting Style ROUND BRILLIANT Measurements 6.51 - 6.55 X 3.84 MM

GRADING RESULTS

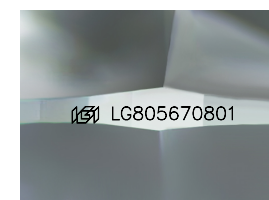
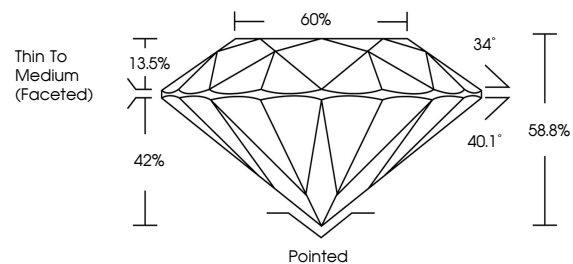
Carat Weight 1.00 CARAT Color Grade F Clarity Grade VVS 2 Cut Grade IDEAL

ADDITIONAL GRADING INFORMATION

Polish EXCELLENT Symmetry EXCELLENT Fluorescence NONE Inscription(s) IGI LG805670801

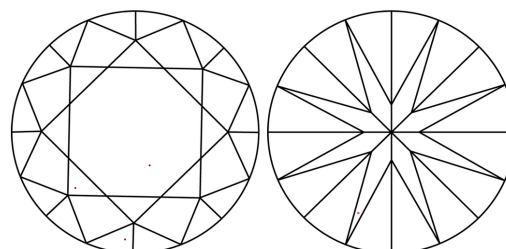
Comments: This Laboratory Grown Diamond was created by Chemical Vapor Deposition (CVD) growth process. Type IIa

PROPORTIONS



Sample Image Used

CLARITY CHARACTERISTICS



KEY TO SYMBOLS

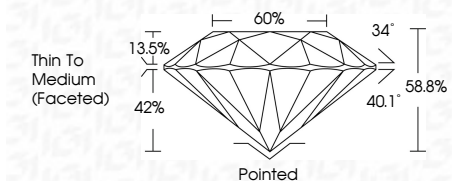
Red symbols indicate internal characteristics. Green symbols indicate external characteristics.

COLOR

D E F G H I J Faint Very Light Light

CLARITY

FL IF VVS 1-2 VS 1-2 SI 1-2 I 1-3 Flawless Internally Flawless Very Very Slightly Included Very Slightly Included Slightly Included Included



ADDITIONAL GRADING INFORMATION

Polish EXCELLENT Symmetry EXCELLENT Fluorescence NONE Inscription(s) IGI LG805670801 Comments: This Laboratory Grown Diamond was created by Chemical Vapor Deposition (CVD) growth process. Type IIa



May 28, 2026 IGI Report No. LG805670801 ROUND BRILLIANT 6.51 - 6.55 X 3.84 MM 1.00 CARAT F VVS 2 IDEAL 58.8% 60% Thin To Medium (Faceted) Pointed EXCELLENT EXCELLENT NONE NONE IGI LG805670801 Comments: This Laboratory Grown Diamond was created by Chemical Vapor Deposition (CVD) growth process. Type IIa