



**ELECTRONIC COPY**

LG805682786  
Report verification at [igi.org](http://igi.org)



June 4, 2026  
IGI Report Number **LG805682786**  
Description **LABORATORY GROWN DIAMOND**  
Shape and Cutting Style **ROUND BRILLIANT**  
Measurements **6.51 - 6.55 X 4.12 MM**  
**GRADING RESULTS**  
Carat Weight **1.10 CARAT**  
Color Grade **D**  
Clarity Grade **VS 1**  
Cut Grade **EXCELLENT**

June 4, 2026  
IGI Report Number **LG805682786**  
Description **LABORATORY GROWN DIAMOND**  
Shape and Cutting Style **ROUND BRILLIANT**  
Measurements **6.51 - 6.55 X 4.12 MM**

**GRADING RESULTS**

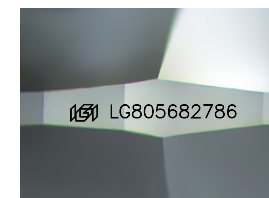
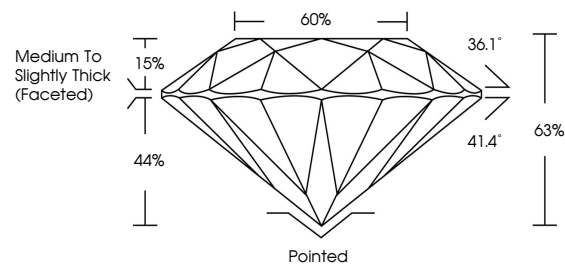
Carat Weight **1.10 CARAT**  
Color Grade **D**  
Clarity Grade **VS 1**  
Cut Grade **EXCELLENT**

**ADDITIONAL GRADING INFORMATION**

Polish **EXCELLENT**  
Symmetry **EXCELLENT**  
Fluorescence **NONE**  
Inscription(s) **IGI LG805682786**

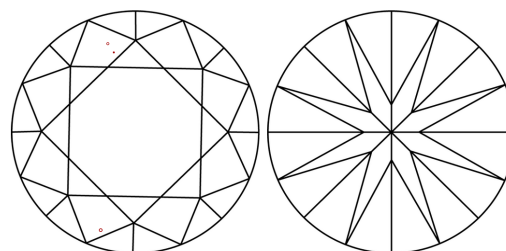
Comments: This Laboratory Grown Diamond was created by Chemical Vapor Deposition (CVD) growth process.  
Type IIa

**PROPORTIONS**



Sample Image Used

**CLARITY CHARACTERISTICS**



**KEY TO SYMBOLS**

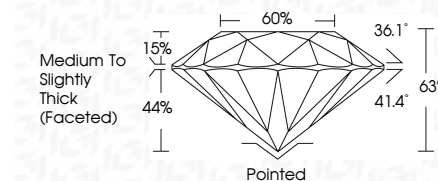
Red symbols indicate internal characteristics.  
Green symbols indicate external characteristics.

**COLOR**

D E F G H I J Faint Very Light Light

**CLARITY**

FL	IF	VS <sup>1-2</sup>	VS <sup>1-2</sup>	SI <sup>1-2</sup>	I <sup>1-3</sup>
Flawless	Internally Flawless	Very Very Slightly Included	Very Slightly Included	Slightly Included	Included



**ADDITIONAL GRADING INFORMATION**

Polish **EXCELLENT**  
Symmetry **EXCELLENT**  
Fluorescence **NONE**  
Inscription(s) **IGI LG805682786**  
Comments: This Laboratory Grown Diamond was created by Chemical Vapor Deposition (CVD) growth process.  
Type IIa



**IGI**



June 4, 2026  
IGI Report No LG805682786  
**ROUND BRILLIANT**  
6.51 - 6.55 X 4.12 MM  
1.10 CARAT  
Color Grade **D**  
Clarity Grade **VS 1**  
Cut Grade **EXCELLENT**  
Depth **65%**  
Table **66%**  
Girdle **Medium To Slightly Thick (Faceted)**  
Culet **Pointed**  
Polish **EXCELLENT**  
Symmetry **EXCELLENT**  
Fluorescence **NONE**  
Inscription(s) **IGI LG805682786**  
Comments: This Laboratory Grown Diamond was created by Chemical Vapor Deposition (CVD) growth process.  
Type IIa