



ELECTRONIC COPY

LG805684904 Report verification at igi.org



June 4, 2026

IGI Report Number LG805684904

Description LABORATORY GROWN DIAMOND

Shape and Cutting Style CUT CORNERED RECTANGULAR MODIFIED BRILLIANT

Measurements 8.90 X 6.06 X 4.14 MM

GRADING RESULTS

Carat Weight 1.97 CARAT

Color Grade E

Clarity Grade VS 1

LABORATORY GROWN DIAMOND REPORT

June 4, 2026

IGI Report Number LG805684904

Description LABORATORY GROWN DIAMOND

Shape and Cutting Style CUT CORNERED RECTANGULAR MODIFIED BRILLIANT

Measurements 8.90 X 6.06 X 4.14 MM

GRADING RESULTS

Carat Weight 1.97 CARAT

Color Grade E

Clarity Grade VS 1

ADDITIONAL GRADING INFORMATION

Polish EXCELLENT

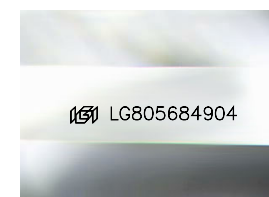
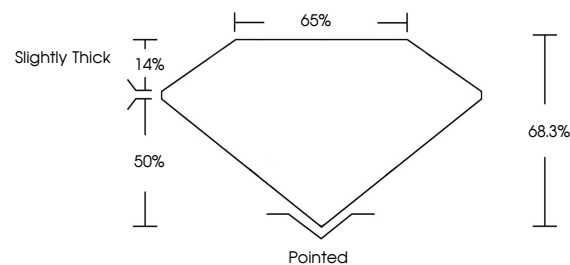
Symmetry EXCELLENT

Fluorescence NONE

Inscription(s) LG805684904

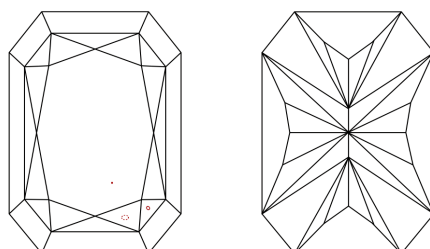
Comments: This Laboratory Grown Diamond was created by Chemical Vapor Deposition (CVD) growth process. Type IIa

PROPORTIONS



Sample Image Used

CLARITY CHARACTERISTICS



KEY TO SYMBOLS

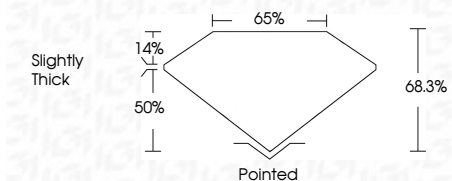
Red symbols indicate internal characteristics. Green symbols indicate external characteristics.

COLOR

D E F G H I J Faint Very Light Light

CLARITY

FL IF VS 1-2 VS 2-2 SI 1-2 I 1-3
Flawless Internally Flawless Very Very Slightly Included Very Slightly Included Slightly Included Included



ADDITIONAL GRADING INFORMATION

Polish EXCELLENT

Symmetry EXCELLENT

Fluorescence NONE

Inscription(s) LG805684904

Comments: This Laboratory Grown Diamond was created by Chemical Vapor Deposition (CVD) growth process. Type IIa



IGI



June 4, 2026
IGI Report No. LG805684904
CUT CORNERED RECT. MODIFIED BRILLIANT
8.90 X 6.06 X 4.14 MM
Carat Weight 1.97 CARAT
Color Grade E
Clarity Grade VS 1
Depth 68.3%
Table 50%
Girdle Slightly Thick
Culet Pointed
Polish EXCELLENT
Symmetry EXCELLENT
Fluorescence NONE
Inscription(s) LG805684904
Comments: This Laboratory Grown Diamond was created by Chemical Vapor Deposition (CVD) growth process. Type IIa