



**ELECTRONIC COPY**

LG805685999  
Report verification at igi.org



June 3, 2026

IGI Report Number **LG805685999**

Description **LABORATORY GROWN DIAMOND**

Shape and Cutting Style **ROUND BRILLIANT**

Measurements **6.54 - 6.58 X 4.08 MM**

**GRADING RESULTS**

Carat Weight **1.08 CARAT**

Color Grade **D**

Clarity Grade **VS 1**

Cut Grade **IDEAL**

June 3, 2026

IGI Report Number **LG805685999**

Description **LABORATORY GROWN DIAMOND**

Shape and Cutting Style **ROUND BRILLIANT**

Measurements **6.54 - 6.58 X 4.08 MM**

**GRADING RESULTS**

Carat Weight **1.08 CARAT**

Color Grade **D**

Clarity Grade **VS 1**

Cut Grade **IDEAL**

**ADDITIONAL GRADING INFORMATION**

Polish **EXCELLENT**

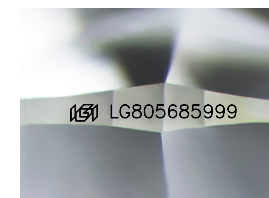
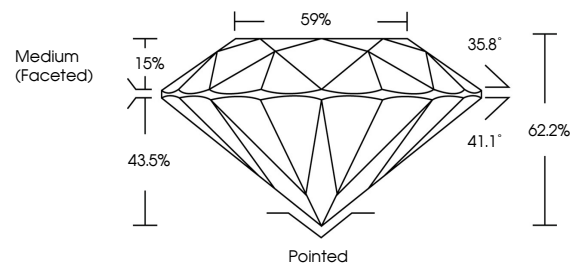
Symmetry **EXCELLENT**

Fluorescence **NONE**

Inscription(s) **LG805685999**

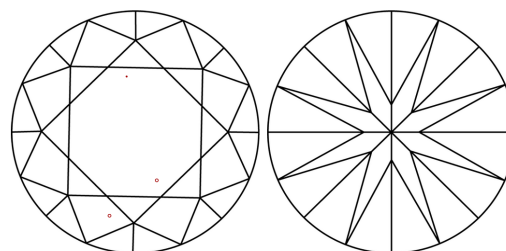
Comments: This Laboratory Grown Diamond was created by Chemical Vapor Deposition (CVD) growth process.  
Type IIa

**PROPORTIONS**



Sample Image Used

**CLARITY CHARACTERISTICS**



**KEY TO SYMBOLS**

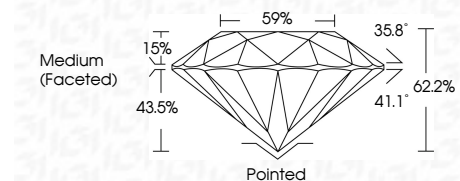
Red symbols indicate internal characteristics.  
Green symbols indicate external characteristics.

**COLOR**

D E F G H I J Faint Very Light Light

**CLARITY**

FL	IF	VS <sup>1-2</sup>	VS <sup>1-2</sup>	SI <sup>1-2</sup>	I <sup>1-3</sup>
Flawless	Internally Flawless	Very Very Slightly Included	Very Slightly Included	Slightly Included	Included



**ADDITIONAL GRADING INFORMATION**

Polish **EXCELLENT**

Symmetry **EXCELLENT**

Fluorescence **NONE**

Inscription(s) **LG805685999**

Comments: This Laboratory Grown Diamond was created by Chemical Vapor Deposition (CVD) growth process.  
Type IIa



**IGI**



June 3, 2026	1.08 CARAT	D	VS 1	IDEAL	62.2%	59%	Medium (Faceted)	Pointed	EXCELLENT	EXCELLENT	NONE	LG805685999
IGI Report No LG805685999	Carat Weight	Color Grade	Clarity Grade	Cut Grade	Depth	Table	Girdle	Culet	Polish	Symmetry	Fluorescence	Inscription(s)
ROUND BRILLIANT	6.54 - 6.58 X 4.08 MM	D	VS 1	IDEAL	62.2%	15%	Medium (Faceted)	Pointed	EXCELLENT	EXCELLENT	NONE	LG805685999

Comments: This Laboratory Grown Diamond was created by Chemical Vapor Deposition (CVD) growth process.  
Type IIa